

FREM2 Polyclonal Antibody

catalog number: **E-AB-91389**

Note: Centrifuge before opening to ensure complete recovery of vial contents.

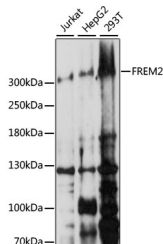
Description

Reactivity	Human;Mouse
Immunogen	Recombinant fusion protein of human FREM2
Host	Rabbit
Isotype	IgG
Purification	Affinity purification
Buffer	Phosphate buffered solution, pH 7.4, containing 0.05% stabilizer and 50% glycerol.

Applications

Applications	Recommended Dilution
WB	1:500-1:2000
IF	1:50-1:200

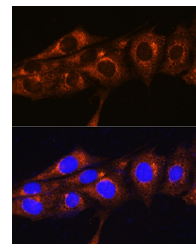
Data



Western blot analysis of extracts of various cell lines using FREM2 Polyclonal Antibody at 1:1000 dilution.

Observed-MW:351 kDa

Calculated-MW:295 kDa/351 kDa



Immunofluorescence analysis of NIH/3T3 cells using FREM2 Polyclonal Antibody at dilution of 1:100. Blue: DAPI for nuclear staining.

Preparation & Storage

Storage	Store at -20°C Valid for 12 months. Avoid freeze / thaw cycles.
Shipping	The product is shipped with ice pack, upon receipt, store it immediately at the temperature recommended.

Background

This gene encodes an integral membrane protein containing numerous CSPG(chondroitin sulfate proteoglycan element) repeats and Calx-beta domains. The encoded protein localizes to the basement membrane, forming a ternary complex that plays a role in epidermal-dermal interactions. This protein is important for the integrity of skin and renal epithelia. Mutations in this gene are associated with Fraser syndrome.

For Research Use Only