

Recombinant Human FSH-b protein (His Tag)

Catalog Number: PDEH100120

Note: Centrifuge before opening to ensure complete recovery of vial contents.

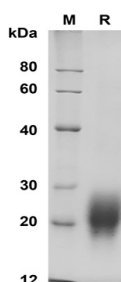
Description

Species	Human
Source	E.coli-derived Human FSH-b protein Met1-Glu129, with an C-terminal His
Calculated MW	14.1 kDa
Observed MW	20-28 kDa
Accession	P01225
Bio-activity	Not validated for activity

Properties

Purity	> 95% as determined by reducing SDS-PAGE.
Endotoxin	< 10 EU/mg of the protein as determined by the LAL method
Storage	Generally, lyophilized proteins are stable for up to 12 months when stored at -20 to -80 °C. Reconstituted protein solution can be stored at 4-8°C for 2-7 days. Aliquots of reconstituted samples are stable at < -20°C for 3 months.
Shipping	This product is provided as lyophilized powder which is shipped with ice packs.
Formulation	Lyophilized from a 0.2 µm filtered solution in PBS with 5% Trehalose and 5% Mannitol.
Reconstitution	It is recommended that sterile water be added to the vial to prepare a stock solution of 0.5 mg/mL. Concentration is measured by UV-Vis.

Data



SDS-PAGE analysis of Human FSH-b proteins, 2µg/lane of Recombinant Human FSH-b proteins was resolved with SDS-PAGE under reducing conditions, showing bands at 20-28 KD.

Background

Follitropin Subunit β (FSHB) is a secreted protein that belongs to the glycoprotein hormones subunit β family. The pituitary glycoprotein hormone family includes follicle-stimulating hormone, luteinizing hormone, chorionic gonadotropin, and thyroid-stimulating hormone. FSHB exists in a heterodimer of a common α chain and an unique β chain that confers biological specificity to thyrotropin, lutropin, follitropin, and gonadotropin. FSHB stimulates development of follicle and spermatogenesis in the reproductive organs. Defects in FSHB are a cause of isolated follicle-stimulating hormone deficiency (IFSHD).

For Research Use Only

Toll-free: 1-888-852-8623
Web: www.elabscience.com

Tel: 1-832-243-6086
Email: techsupport@elabscience.com

Fax: 1-832-243-6017