

## Pqbp1 Polyclonal Antibody

**catalog number: E-AB-92114**

**Note:** Centrifuge before opening to ensure complete recovery of vial contents.

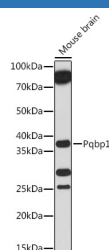
### Description

<b>Reactivity</b>	Human;Mouse;Rat
<b>Immunogen</b>	Recombinant fusion protein of mouse Pqbp1
<b>Host</b>	Rabbit
<b>Isotype</b>	IgG
<b>Purification</b>	Affinity purification
<b>Buffer</b>	Phosphate buffered solution, pH 7.4, containing 0.05% stabilizer and 50% glycerol.

### Applications Recommended Dilution

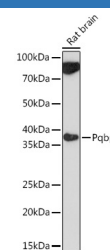
<b>WB</b>	1:500-1:2000
-----------	--------------

### Data



Western blot analysis of extracts of Mouse brain using Pqbp1 Polyclonal Antibody at 1:1000 dilution.

**Observed-MV:35 kDa**



Western blot analysis of extracts of Rat brain using Pqbp1 Polyclonal Antibody at 1:1000 dilution.

**Observed-MV:35 kDa**

### Preparation & Storage

<b>Storage</b>	Store at -20°C Valid for 12 months. Avoid freeze / thaw cycles.
<b>Shipping</b>	The product is shipped with ice pack, upon receipt, store it immediately at the temperature recommended.

### Background

Intrinsically disordered protein that acts as a scaffold, and which is involved in different processes, such as pre-mRNA splicing, transcription regulation, innate immunity and neuron development (By similarity). Interacts with splicing-related factors via the intrinsically disordered region and regulates alternative splicing of target pre-mRNA species. May suppress the ability of POU3F2 to transactivate the DRD1 gene in a POU3F2 dependent manner (By similarity). Can activate transcription directly or via association with the transcription machinery (By similarity). May be involved in ATXN1 mutant-induced cell death (By similarity). The interaction with ATXN1 mutant reduces levels of phosphorylated RNA polymerase II large subunit (By similarity). Involved in the assembly of cytoplasmic stress granule, possibly by participating in the transport of neuronal RNA granules (By similarity). Also acts as an innate immune sensor of infection by retroviruses, by detecting the presence of reverse-transcribed DNA in the cytosol (By similarity). Directly binds retroviral reverse-transcribed DNA in the cytosol and interacts with CGAS, leading to activate the cGAS-STING signaling pathway, triggering type-I interferon production (By similarity).

### For Research Use Only