

Betacellulin/BTC Polyclonal Antibody

catalog number: AN005970L

Note: Centrifuge before opening to ensure complete recovery of vial contents.

Description

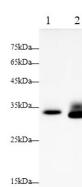
Reactivity	Mouse;Rat
Immunogen	Recombinant Mouse Betacellulin/BTC protein expressed by E.coli
Host	Rabbit
Isotype	IgG
Purification	Antigen Affinity Purification
Conjugation	Unconjugated
buffer	PBS with 0.05% proclin 300, 1% protective protein and 50% glycerol,pH7.4

Applications

Recommended Dilution

WB 1:1000-1:2000

Data



Western blot with Anti Betacellulin/BTC Polyclonal antibody at dilution of 1:1000. Lane 1: Mouse pancreas tissue lysate, Lane 2: Rat pancreas tissue lysate.

Observed-MV:32 kDa

Calculated-MV:19 kDa

Preparation & Storage

Storage	Store at -20°C Valid for 12 months. Avoid freeze / thaw cycles.
Shipping	The product is shipped with ice pack, upon receipt, store it immediately at the temperature recommended.

Background

Betacellulin (BTC), a member of the epidermal growth factor (EGF) family, was originally isolated from mouse beta cell tumor (betaTC-3) as a growth-promoting factor and is known to be expressed in pancreatic α -cells, β -cells, and duct cells in adult humans. BTC acts through binding to four ErbB tyrosine kinase receptors (EGF-R/ErbB-1, neu/ErbB-2, ErbB-3, and ErbB-4).

For Research Use Only