

PLEKHF2 Polyclonal Antibody

Catalog Number:E-AB-53115



Note: Centrifuge before opening to ensure complete recovery of vial contents.

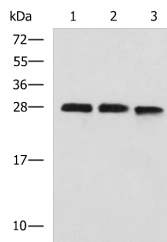
Description

Reactivity	Human, Mouse
Immunogen	Fusion protein of human PLEKHF2
Host	Rabbit
Isotype	IgG
Purification	Antigen affinity purification
Conjugation	Unconjugated
Formulation	PBS with 0.05% NaN ₃ and 40% Glycerol,pH7.4

Applications Recommended Dilution

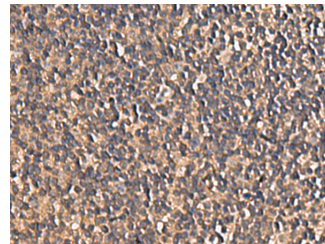
WB	1:1000-1:5000
IHC	1:100-1:200
ELISA	1:5000-1:10000

Data

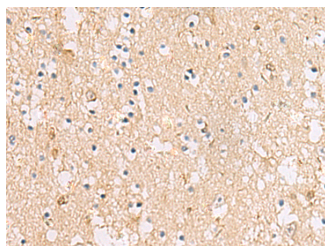


Western blot analysis of 293T and K562 cell lysates using PLEKHF2 Polyclonal Antibody at dilution of 1:1400

Observed Mw:Refer to figures
Calculated Mw:28 kDa



Immunohistochemistry of paraffin-embedded Human tonsil tissue using PLEKHF2 Polyclonal Antibody at dilution of 1:85(×200)



Immunohistochemistry of paraffin-embedded Human brain tissue using PLEKHF2 Polyclonal Antibody at dilution of 1:85(×200)

Preparation & Storage

Storage Store at -20°C. Avoid freeze / thaw cycles.

Background

For Research Use Only

A Reliable Research Partner in Life Science and Medicine

Toll-free: 1-888-852-8623

Web: www.elabscience.com

Tel: 1-832-243-6086

Email: techsupport@elabscience.com

Fax: 1-832-243-6017

PLEKHF2 Polyclonal Antibody

Catalog Number: E-AB-53115



May play a role in early endosome fusion upstream of RAB5, hence regulating receptor trafficking and fluid-phase transport. Enhances cellular sensitivity to TNF-induced apoptosis (PubMed:18288467).

For Research Use Only

A Reliable Research Partner in Life Science and Medicine

Toll-free: 1-888-852-8623

Tel: 1-832-243-6086

Fax: 1-832-243-6017

Web: www.elabscience.com

Email: techsupport@elabscience.com