

CORO2B Polyclonal Antibody

catalog number: **E-AB-19746**

Note: Centrifuge before opening to ensure complete recovery of vial contents.

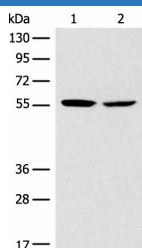
Description

Reactivity	Human;Mouse
Immunogen	Synthetic peptide of human CORO2B
Host	Rabbit
Isotype	IgG
Purification	Antigen affinity purification
Buffer	Phosphate buffered solution, pH 7.4, containing 0.05% stabilizer and 50% glycerol.

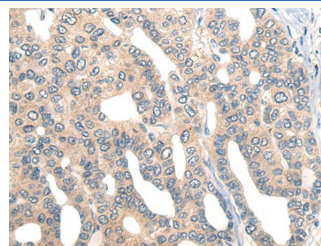
Applications

Applications	Recommended Dilution
WB	1:1000-1:5000
IHC	1:40-1:200

Data



Western blot analysis of Mouse brain tissue NIH/3T3 cell lysates using CORO2B Polyclonal Antibody at dilution of 1:1000



Immunohistochemistry of paraffin-embedded Human liver cancer tissue using CORO2B Polyclonal Antibody at dilution of 1:50(×200)

Observed-MW:Refer to figures
Calculated-MW:55 kDa

Preparation & Storage

Storage	Store at -20°C Valid for 12 months. Avoid freeze / thaw cycles.
Shipping	The product is shipped with ice pack,upon receipt,store it immediately at the temperature recommended.

Background

For Research Use Only

Coronins are a family of WD repeat-containing, actin-binding proteins that localize to submembraneous areas and regulate cell motility and cytoskeletal rearrangement. Coronin 1A (CORO1A, CLIPINA, CLABP, TACO, p57) can form coiled coil-mediated homotrimeric complexes that influence early phagosome formation. PKC-dependent phosphorylation of Coronin 1B (CORO1B) at Serine 2 regulates leading edge dynamics and cell motility in fibroblasts through interactions with Arp2/3 complex. Coronin 1C (CORO1C, Coronin 3, HCRNN4) is abundant in differentiating Neuro-2a cells, PC-12 cells and primary oligodendrocytes, where it is thought to influence neuron morphogenesis and migration. Coronin 2A (CORO2A, CLIPINB, IR10, WDR2) is a component of the approximately 1.5-2 megadalton N-CoR (nuclear receptor corepressor) complex of 10-12 proteins, which recruits HDACs to generate repressive chromatin. Coronin 7 (CORO7, CRN7) localizes to the Golgi membrane and influences the organization of intracellular membrane compartments and vesicular trafficking. Coronin 2B (CORO2B, CLIPINC) and Coronin 6 (CORO6) are similar to other members of this family, since they possess a conserved basic N-terminal motif and 3-10 WD repeats clustered in one to two core domains.

For Research Use Only