

Recombinant Mouse Interleukin-5/IL-5 (C-6His)

Catalog Number: PKSM041395

Note: Centrifuge before opening to ensure complete recovery of vial contents.

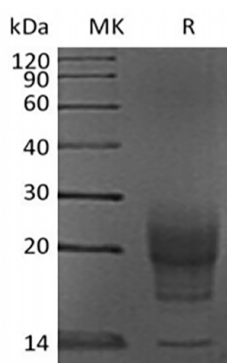
Description

Species	Mouse
Source	HEK293 Cells-derived Mouse Interleukin-5/IL-5 protein Met21-Gly133, with an C-terminal His
Calculated MW	13.9 kDa
Observed MW	14-26 kDa
Accession	P04401
Bio-activity	Not validated for activity

Properties

Purity	> 95 % as determined by reducing SDS-PAGE.
Endotoxin	< 1.0 EU per µg of the protein as determined by the LAL method.
Storage	Generally, lyophilized proteins are stable for up to 12 months when stored at -20 to -80 °C. Reconstituted protein solution can be stored at 4-8°C for 2-7 days. Aliquots of reconstituted samples are stable at < -20°C for 3 months.
Shipping	This product is provided as lyophilized powder which is shipped with ice packs.
Formulation	Lyophilized from a 0.2 µm filtered solution of PBS, pH 7.4. Normally 5% - 8% trehalose, mannitol and 0.01% Tween 80 are added as protectants before lyophilization. Please refer to the specific buffer information in the printed manual.
Reconstitution	Please refer to the printed manual for detailed information.

Data



> 95 % as determined by reducing SDS-PAGE.

Background

IL-5 is expressed in eosinophils, NK cells, TC2 CD8+ T cells, mast cells, CD45+ CD4+ T cells, gamma delta T cells and IL-1 beta activated endothelial cells. IL-5 acts as a growth and differentiation factor for both B cells and eosinophils. Relative to B cells, IL-5 appears to induce the differentiation of activated conventional B-2 cells into Ig-secreting cells. In addition, it induces the growth of B-1 progenitors as well as IgM production by B-1 cells. IL-5 appears to perform a number of functions on eosinophils. These include the down modulation of Mac-1, the upregulation of receptors for IgA and IgG, the stimulation of lipid mediator (leukotriene C4 and PAF) secretion and the induction of granule release. IL-5 also promotes the growth and differentiation of eosinophils.

For Research Use Only