

## Elab Fluor® 700 Anti-Mouse Ly6C Antibody[Monts 1]

Catalog Number: E-AB-F1121M1

**Note:** Centrifuge before opening to ensure complete recovery of vial contents.

### Description

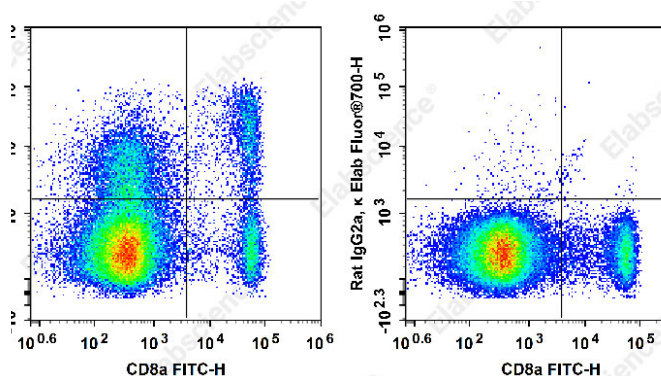
Reactivity	Mouse
Host	Rat
Isotype	Rat IgG2a, $\kappa$
Clone No.	Monts 1
Isotype Control	Elab Fluor® 700 Rat IgG2a, $\kappa$ Isotype Control[2A3] [Product E-AB-F09832M1]
Conjugation	Elab Fluor® 700
Conjugation Information	Elab Fluor® 700 is designed to be excited by the Red laser (627-640 nm) and detected using an optical filter centered near 719 nm (e.g., a 725/40 nm bandpass filter).
Storage Buffer	Phosphate buffered solution, pH 7.2, containing 0.09% stabilizer and 1% protein protectant.

### Applications

### Recommended usage

FCM	Each lot of this antibody is quality control tested by flow cytometric analysis. <b>The amount of the reagent is suggested to be used 5 <math>\mu</math>L of antibody per test (million cells in 100 <math>\mu</math>L staining volume or per 100 <math>\mu</math>L of whole blood).</b> Please check your vial before the experiment. Since applications vary, the appropriate dilutions must be determined for individual use.
-----	--

### Data



Staining of C57BL/6 murine splenocytes with FITC Anti-

Mouse CD8a Antibody[53-6.7] and Elab Fluor® 700 Anti-Mouse Ly6C Antibody[Monts 1](left) or Elab Fluor® 700 Rat IgG2a,  $\kappa$  Isotype Control(right). Total viable cells were used for analysis.

### Preparation & Storage

Storage	Keep as concentrated solution. This product can be stored at 2-8°C for 12 months. Please protected from prolonged exposure to light and do not freeze.
Shipping	Ice bag

### Antigen Information

Alternate Names	locus C;Ly6C;Ly6c1;Ly6c2;Lymphocyte antigen 6 complex
Uniprot ID	POCW03

### For Research Use Only

Toll-free: 1-888-852-8623  
Web: [www.elabscience.com](http://www.elabscience.com)

Tel: 1-832-243-6086  
Email: [techsupport@elabscience.com](mailto:techsupport@elabscience.com)

Fax: 1-832-243-6017

Rev. V1.7

**Gene ID**

17067

**Background**

Most hematopoietic cells express one or more members of Ly-6 family. The expression of Ly-6 varies with development stage and activation. Ly-6C is a 14-17 kD GPI-linked surface protein expressed on mouse monocyte/macrophage cells, endothelial cells, neutrophils, and some T cell subsets. Ly-6C is reported to be an indicator of memory CD8+ T cells.