

Pancreatic Lipase/PTL Polyclonal Antibody

catalog number: AN007000L

Note: Centrifuge before opening to ensure complete recovery of vial contents.

Description

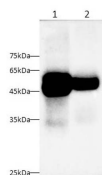
Reactivity	Mouse;Rat
Immunogen	Recombinant Human Pancreatic Lipase/PTL protein expressed by Mammalian
Host	Rabbit
Isotype	IgG
Purification	Antigen Affinity Purification
Conjugation	Unconjugated
Buffer	PBS with 0.05% Proclin300, 1% protective protein and 50% glycerol, pH7.4

Applications

Recommended Dilution

WB	1:5000-1:10000
-----------	----------------

Data



Western blot with Anti Pancreatic Lipase/PTL Polyclonal antibody at dilution of 1:5000. Lane 1: Mouse pancreas tissue lysate, Lane 2: Rat pancreas tissue lysate.

Observed-MW:51kDa

Calculated-MW:51 kDa

Preparation & Storage

Storage	Store at -20°C Valid for 12 months. Avoid freeze / thaw cycles.
Shipping	The product is shipped with ice pack, upon receipt, store it immediately at the temperature recommended.

Background

Plays an important role in fat metabolism. It preferentially splits the esters of long-chain fatty acids at positions 1 and 3, producing mainly 2-monoacylglycerol and free fatty acids, and shows considerably higher activity against insoluble emulsified substrates than against soluble ones.