

# Recombinant Human IRF5 Protein (His Tag)

Catalog Number:PKSH032603



**Note:** Centrifuge before opening to ensure complete recovery of vial contents.

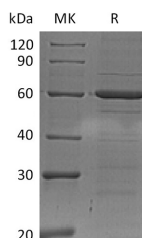
## Description

<b>Synonyms</b>	Interferon Regulatory Factor 5;IRF-5;IRF5
<b>Species</b>	Human
<b>Expression Host</b>	E.coli
<b>Sequence</b>	Met 1-Gln498
<b>Accession</b>	Q13568
<b>Calculated Molecular Weight</b>	57.1 kDa
<b>Observed molecular weight</b>	62 kDa
<b>Tag</b>	C-His

## Properties

<b>Purity</b>	> 95 % as determined by reducing SDS-PAGE.
<b>Endotoxin</b>	< 1.0 EU per µg of the protein as determined by the LAL method.
<b>Storage</b>	Store at < -20°C, stable for 6 months. Please minimize freeze-thaw cycles.
<b>Shipping</b>	This product is provided as liquid. It is shipped at frozen temperature with blue ice/gel packs. Upon receipt, store it immediately at < - 20°C.
<b>Formulation</b>	Supplied as a 0.2 µm filtered solution of 20mM Tris-HCl, 150mM NaCl, 30% Glycerol, 1mM DTT, pH 8.0.
<b>Reconstitution</b>	Not Applicable

## Data



> 95 % as determined by reducing SDS-PAGE.

## Background

Interferon Regulatory Factor 5 (IRF5) is a member of the IRF family. It contains one IRF tryptophan pentad repeat DNA-binding domain. IRF5 shuttles between the nucleus and the cytoplasm. IRF5 can form homodimer when it is phosphorylated. IRF5 functions as a transcription factor involved in the induction of interferons IFNA and INFB and inflammatory cytokines upon virus infection. Genetic variations in IRF5 are associated with susceptibility to systemic lupus erythematosus type 10. In addition, the genetic variations will result in susceptibility to rheumatoid arthritis.

## For Research Use Only

A Reliable Research Partner in Life Science and Medicine

Toll-free: 1-888-852-8623

Web: [www.elabscience.com](http://www.elabscience.com)

Tel: 1-832-243-6086

Email: [techsupport@elabscience.com](mailto:techsupport@elabscience.com)

Fax: 1-832-243-6017