

PDCD4 Polyclonal Antibody

catalog number: E-AB-40340

Note: Centrifuge before opening to ensure complete recovery of vial contents.

Description

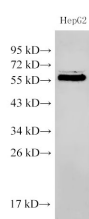
Reactivity	Human;Mouse;Rat
Immunogen	Recombinant Human Programmed cell death protein 4 protein
Host	Rabbit
Isotype	IgG
Purification	Antigen Affinity Purification
Conjugation	Unconjugated
buffer	PBS with 0.05% proclin 300, 1% protective protein and 50% glycerol,pH7.4

Applications

Recommended Dilution

WB	1:500-1:1000
IHC	1:100-1:300

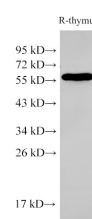
Data



Western Blot analysis of HepG2 cells using PDCD4 Polyclonal Antibody at dilution of 1:500

Observed-MV:56 kDa

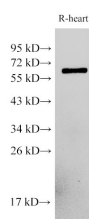
Calculated-MV:50,51 kDa



Western Blot analysis of Rat thymus cells using PDCD4 Polyclonal Antibody at dilution of 1:500

Observed-MV:56 kDa

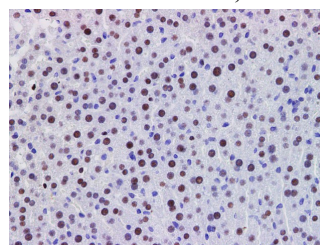
Calculated-MV:50,51 kDa



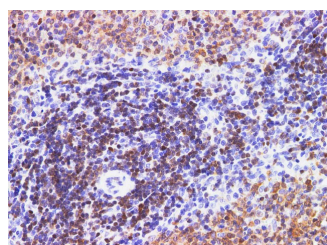
Western Blot analysis of Rat heart cells using PDCD4 Polyclonal Antibody at dilution of 1:500

Observed-MV:56 kDa

Calculated-MV:50,51 kDa



Immunohistochemistry of paraffin-embedded Mouse liver using PDCD4 Polyclonal Antibody at dilution of 1:200



Immunohistochemistry of paraffin-embedded Rat spleen using PDCD4 Polyclonal Antibody at dilution of 1:200

Preparation & Storage

For Research Use Only

PDCD4 Polyclonal Antibody

catalog number: E-AB-40340



Storage	Store at -20°C Valid for 12 months. Avoid freeze / thaw cycles.
Shipping	The product is shipped with ice pack, upon receipt, store it immediately at the temperature recommended.

Background

Programmed cell death 4 (Pdc4) is a novel tumor suppressor that inhibits translation, progression and invasion. It was first identified as being differentially upregulated during apoptosis. Pdc4 interferes with the activity of the eukaryotic initiation factor (eIF) 4A by displacing the scaffold protein eIF4G from its binding to the RNA helicase eIF4A.

For Research Use Only

A Reliable Research Partner in Life Science and Medicine
Tel: 400-999-2100

Email: techsupport@elabscience.cn

Web: www.elabscience.cn

Rev. V1.8