

## PE/Cyanine5.5 Anti-Mouse/Human CD11b Antibody[M1/70]

Catalog Number: E-AB-F1081I

**Note:** Centrifuge before opening to ensure complete recovery of vial contents.

### Description

Reactivity	Human;Mouse
Host	Rat
Isotype	Rat IgG2b, $\kappa$
Clone No.	M1/70
Isotype Control	PE/Cyanine5.5 Rat IgG2b, $\kappa$ Isotype Control[LTF-2] [Product E-AB-F09842I]
Conjugation	PE/Cyanine 5.5
Conjugation Information	PE/Cyanine5.5 is designed to be excited by the Blue (488 nm), Green (532 nm) and yellow-green (561 nm) lasers and detected using an optical filter centered near 690 nm (e.g., a 690/50 nm bandpass filter).
Storage Buffer	Phosphate buffered solution, pH 7.2, containing 0.09% stabilizer and 1% protein protectant.

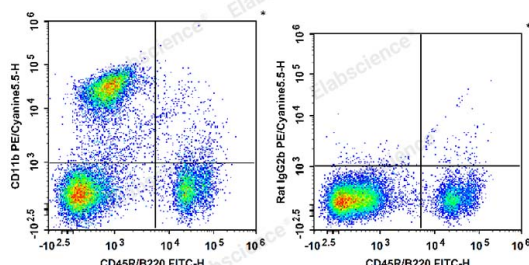
### Applications

### Recommended usage

#### FCM

Each lot of this antibody is quality control tested by flow cytometric analysis. **The amount of the reagent is suggested to be used 5  $\mu$ L of antibody per test (million cells in 100  $\mu$ L staining volume or per 100  $\mu$ L of whole blood).** Please check your vial before the experiment. Since applications vary, the appropriate dilutions must be determined for individual use.

### Data



C57BL/6 murine bone marrow cells are stained with FITC Anti-Mouse CD45R/B220 Antibody and PE/Cyanine5.5 Anti-Mouse/Human CD11b Antibody (Left). Bone marrow cells are stained with FITC Anti-Mouse CD45R/B220 Antibody and PE/Cyanine5.5 Rat IgG2b,  $\kappa$  Isotype Control (Right).

### Preparation & Storage

Storage	Keep as concentrated solution. This product can be stored at 2-8°C for 12 months. Please protected from prolonged exposure to light and do not freeze.
Shipping	Ice bag

### Antigen Information

Alternate Names	CD11 antigen-like family member B;CD11b;CR-3 alpha chain;Integrin alpha-M;Itgam; Leukocyte adhesion receptor MO1
-----------------	--

### For Research Use Only

<b>Uniprot ID</b>	P05555;P11215
<b>Gene ID</b>	16409,3684
<b>Background</b>	CD11b is a 170 kD glycoprotein also known as $\alpha$ M integrin, Mac-1 $\alpha$ subunit, Mol, CR3, and Ly-40. CD11b is a member of the integrin family, primarily expressed on granulocytes, monocytes/macrophages, dendritic cells, NK cells, and subsets of T and B cells. CD11b non-covalently associates with CD18 ( $\beta$ 2 integrin) to form Mac-1. Mac-1 plays an important role in cell-cell interaction by binding its ligands ICAM-1 (CD54), ICAM-2 (CD102), ICAM-4 (CD242), iC3b, and fibrinogen.

## For Research Use Only