

Recombinant Human Carboxypeptidase A2/CPA2 Protein (His Tag)



Catalog Number:PKSH031569

Note: Centrifuge before opening to ensure complete recovery of vial contents.

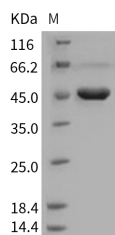
Description

Synonyms	Carboxypeptidase A2;CPA2
Species	Human
Expression Host	HEK293 Cells
Sequence	Met 1-Tyr 417
Accession	NP_001860.2
Calculated Molecular Weight	46.0 kDa
Observed molecular weight	46 kDa
Tag	C-His
Bioactivity	Measured by its ability to cleave a colorimetric peptide substrate, N-acetyl-Phe-Thiaphe-OH (N-Ac-PSP, Peptide International's Catalog# STP-3621-PI), in the presence of 5, 5'Dithio-bis (2-nitrobenzoic acid) (DTNB), as measured using the wavelength at 405 nm and the extinction coefficient of 13, 260 M ⁻¹ cm ⁻¹ . The specific activity is > 4, 000 pmoles/min/μg.

Properties

Purity	> 90 % as determined by reducing SDS-PAGE.
Endotoxin	< 1.0 EU per μg of the protein as determined by the LAL method.
Storage	Generally, lyophilized proteins are stable for up to 12 months when stored at -20 to -80°C. Reconstituted protein solution can be stored at 4-8°C for 2-7 days. Aliquots of reconstituted samples are stable at < -20°C for 3 months.
Shipping	This product is provided as lyophilized powder which is shipped with ice packs.
Formulation	Lyophilized from sterile 25mM Tris, 0.15mM NaCl, pH 7.4 Normally 5 % - 8 % trehalose, mannitol and 0.01% Tween80 are added as protectants before lyophilization. Please refer to the specific buffer information in the printed manual.
Reconstitution	Please refer to the printed manual for detailed information.

Data



> 90 % as determined by reducing SDS-PAGE.

Background

Carboxypeptidase A2 (CPA2) is a secreted pancreatic procarboxy -peptidase, and cleaves the C-terminal amide or ester bond of peptides that have a free C-terminal carboxyl group. The hydrolytic action of CPA2 was identified with a preference towards long substrates with aromatic amino acids in their C-terminal end, particularly tryptophan. CPA2

For Research Use Only

A Reliable Research Partner in Life Science and Medicine

Toll-free: 1-888-852-8623

Web: www.elabscience.com

Tel: 1-832-243-6086

Email: techsupport@elabscience.com

Fax: 1-832-243-6017

Recombinant Human Carboxypeptidase A2/CPA2 Protein (His Tag)



Catalog Number:PKSH031569

comprises a signal peptide, a pro region and a mature chain, and can be activated after cleavage of the pro peptide. Three different forms of human pancreatic procarboxypeptidase A have been isolated, and the A1 and A2 forms are always secreted as monomeric proteins with different biochemical properties.

For Research Use Only

A Reliable Research Partner in Life Science and Medicine

Toll-free: 1-888-852-8623

Web: www.elabscience.com

Tel: 1-832-243-6086

Email: techsupport@elabscience.com

Fax: 1-832-243-6017