

Recombinant SERPINB3/SCCA-1 Monoclonal Antibody

catalog number: **AN300437P**

Note: Centrifuge before opening to ensure complete recovery of vial contents.

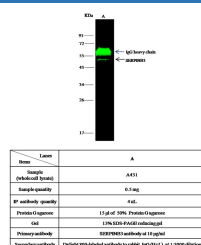
Description

Reactivity	Human
Immunogen	Recombinant Human SERPINB3/SCCA-1 Protein
Host	Rabbit
Isotype	IgG
Clone	5B3
Purification	Protein A
Buffer	0.2 µm filtered solution in PBS

Applications Recommended Dilution

IP	4-8 µL/mg of lysate
-----------	---------------------

Data



Immunoprecipitation analysis using 4 µL anti-SERPINB3 Monoclonal Antibody and 15 µL of 50 % Protein G agarose.

Western blot was performed from the immunoprecipitate using SERPINB3 Monoclonal Antibody at a dilution of 1:100.

Lane A: 0.5 mg A431 Whole Cell Lysate

Preparation & Storage

Storage This antibody can be stored at 2°C-8°C for one month without detectable loss of activity. Antibody products are stable for twelve months from date of receipt when stored at -20°C to -80°C. Preservative-Free. Avoid repeated freeze-thaw cycles.

Shipping Ice bag

Background

Serpin B3, also known as squamous cell carcinoma antigen-1 (SCCA-1), is a member of the serpin superfamily of serine protease inhibitors. Serpin B3 belongs to the subgroup ovalbumin-related serpins which are involved in the regulation of apoptosis, inflammation, angiogenesis and embryogenesis. It may act as a papain-like cysteine protease inhibitor to modulate the host immune response against tumor cells. It also functions as an inhibitor of UV-induced apoptosis via suppression of the activity of c-Jun NH(2)-terminal kinase (JNK1).

For Research Use Only

Toll-free: 1-888-852-8623
Web: www.elabscience.com

Tel: 1-832-243-6086
Email: techsupport@elabscience.com

Fax: 1-832-243-6017

Rev. V1.0