

IGFBPL1 Polyclonal Antibody

catalog number: E-AB-18105

Note: Centrifuge before opening to ensure complete recovery of vial contents.

Description

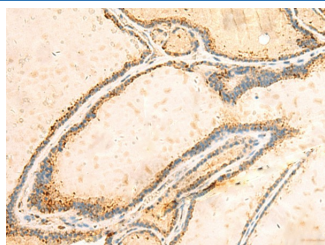
Reactivity	Human
Immunogen	Synthetic peptide of human IGFBPL1
Host	Rabbit
Isotype	IgG
Purification	Antigen affinity purification
Conjugation	Unconjugated
Buffer	Phosphate buffered solution, pH 7.4, containing 0.05% stabilizer and 50% glycerol.

Applications

Recommended Dilution

IHC	1:50-1:300
------------	------------

Data



Immunohistochemistry of paraffin-embedded Human thyroid cancer tissue using IGFBPL1 Polyclonal Antibody at dilution of 1:55(×200)

Preparation & Storage

Storage	Store at -20°C Valid for 12 months. Avoid freeze / thaw cycles.
Shipping	The product is shipped with ice pack, upon receipt, store it immediately at the temperature recommended.

Background

IGFBPL1 (Insulin Like Growth Factor Binding Protein Like 1) is a Protein Coding gene. Diseases associated with IGFBPL1 include Umbilical Hernia. Gene Ontology (GO) annotations related to this gene include insulin-like growth factor binding. An important paralog of this gene is IGFBP7.