

Recombinant Nrf1 Monoclonal Antibody

catalog number: **E-AB-81588**

Note: Centrifuge before opening to ensure complete recovery of vial contents.

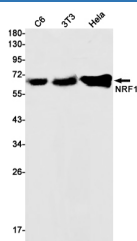
Description

Reactivity	Human;Mouse;Rat
Immunogen	A synthetic peptide of human NRF1
Host	Rabbit
Isotype	IgG
Clone	R02-9A7
Purification	Affinity Purified
Buffer	50mM Tris-Glycine(pH 7.4), 0.15M NaCl, 40% Glycerol, 0.05% stabilizer and 0.05% protective protein.

Applications

Applications	Recommended Dilution
WB	1:2000
IHC	1:50-1:100
IF	1:50-1:200

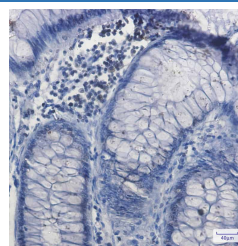
Data



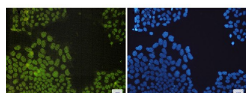
Western blot detection of NRF1 in C6,3T3,Hela cell lysates using NRF1 Rabbit mAb(1:1000 diluted).Predicted band size:54kDa.Observed band size:68kDa.

Observed-MW:68 kDa

Calculated-MW:54 kDa



Immunohistochemistry of NRF1 in paraffin-embedded Human colon cancer tissue using NRF1 Rabbit mAb at dilution 1:50



Immunofluorescence of NRF1(green) in Hela cells using NRF1 Rabbit mAb at dilution 1:200, and DAPI(blue)

Preparation & Storage

Storage	Store at -20°C Valid for 12 months. Avoid freeze / thaw cycles.
Shipping	The product is shipped with ice pack,upon receipt,store it immediately at the temperature recommended.

Background

For Research Use Only

This gene encodes a protein that homodimerizes and functions as a transcription factor which activates the expression of some key metabolic genes regulating cellular growth and nuclear genes required for respiration, heme biosynthesis, and mitochondrial DNA transcription and replication. The protein has also been associated with the regulation of neurite outgrowth. Alternative splicing results in multiple transcript variants.

For Research Use Only

Toll-free: 1-888-852-8623
Web: www.elabscience.com

Tel: 1-832-243-6086
Email: techsupport@elabscience.com

Fax: 1-832-243-6017

Rev. V1.7