

RITA1 Polyclonal Antibody

catalog number: E-AB-19212

Note: Centrifuge before opening to ensure complete recovery of vial contents.

Description

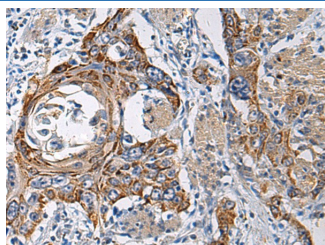
Reactivity	Human
Immunogen	Fusion protein of human RITA1
Host	Rabbit
Isotype	IgG
Purification	Antigen affinity purification
Conjugation	Unconjugated
Buffer	Phosphate buffered solution, pH 7.4, containing 0.05% stabilizer and 50% glycerol.

Applications

Recommended Dilution

IHC	1:50-1:200
------------	------------

Data



Immunohistochemistry of paraffin-embedded Human esophagus cancer tissue using RITA1 Polyclonal Antibody at dilution of 1:60(×200)

Preparation & Storage

Storage	Store at -20°C Valid for 12 months. Avoid freeze / thaw cycles.
Shipping	The product is shipped with ice pack, upon receipt, store it immediately at the temperature recommended.

Background

Tubulin-binding protein that acts as a negative regulator of Notch signaling pathway. Shuttles between the cytoplasm and the nucleus and mediates the nuclear export of RBPJ/RBPSUH, thereby preventing the interaction between RBPJ/RBPSUH and NICD product of Notch proteins (Notch intracellular domain), leading to down-regulate Notch-mediated transcription. May play a role in neurogenesis.