

IRX2 Polyclonal Antibody

catalog number: E-AB-18130

Note: Centrifuge before opening to ensure complete recovery of vial contents.

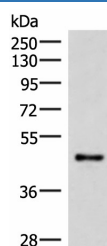
Description

Reactivity	Human;Mouse
Immunogen	Synthetic peptide of human IRX2
Host	Rabbit
Isotype	IgG
Purification	Antigen affinity purification
Conjugation	Unconjugated
buffer	Phosphate buffered solution, pH 7.4, containing 0.05% stabilizer and 50% glycerol.

Applications

Applications	Recommended Dilution
WB	1:500-1:2000
IHC	1:40-1:200

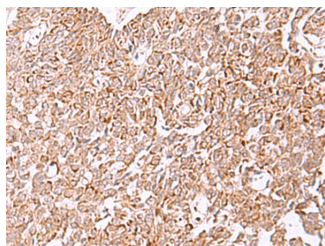
Data



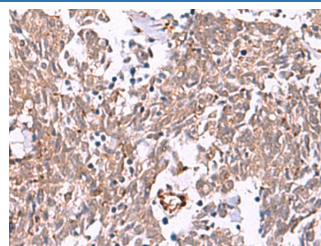
Western blot analysis of Mouse lung tissue lysate using IRX2 Polyclonal Antibody at dilution of 1:300

Observed-MV:Refer to figures

Calculated-MV:49 kDa



Immunohistochemistry of paraffin-embedded Human ovarian cancer tissue using IRX2 Polyclonal Antibody at dilution of 1:45(×200)



Immunohistochemistry of paraffin-embedded Human lung cancer tissue using IRX2 Polyclonal Antibody at dilution of 1:45(×200)

Preparation & Storage

Storage	Store at -20°C Valid for 12 months. Avoid freeze / thaw cycles.
Shipping	The product is shipped with ice pack,upon receipt,store it immediately at the temperature recommended.

Background

IRX2 is a member of the Iroquois homeobox gene family. Members of this family appear to play multiple roles during pattern formation of vertebrate embryos. IRX2 (Iroquois Homeobox 2) is a Protein Coding gene. Diseases associated with IRX2 include Kidney Clear Cell Sarcoma. GO annotations related to this gene include sequence-specific DNA binding. An important paralog of this gene is IRX5.

For Research Use Only