

# SERPINA9 Polyclonal Antibody

catalog number: E-AB-16214

**Note:** Centrifuge before opening to ensure complete recovery of vial contents.

## Description

|                     |  |
|---------------------|--|
| <b>Reactivity</b>   | Human  |
| <b>Immunogen</b>    | Synthetic peptide of human SERPINA9  |
| <b>Host</b>         | Rabbit   |
| <b>Isotype</b>      | IgG  |
| <b>Purification</b> | Affinity purification  |
| <b>Conjugation</b>  | Unconjugated   |
| <b>buffer</b>       | Phosphate buffered solution, pH 7.4, containing 0.05% stabilizer and 50% glycerol. |

## Applications

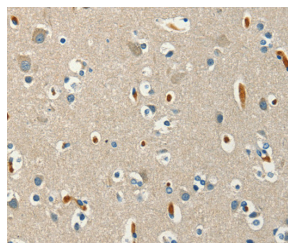
| Applications | Recommended Dilution |
|--------------|----------------------|
| <b>WB</b>    | 1:500-1:2000         |
| <b>IHC</b>   | 1:25-1:100           |

## Data

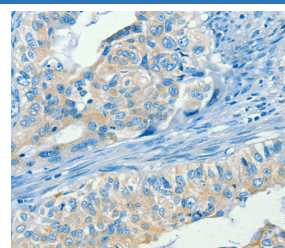


Western Blot analysis of 293T and 231 cell, U937 and Raji cell using SERPINA9 Polyclonal Antibody at dilution of 1:337.5

**Calculated-MV:47 kDa**



Immunohistochemistry of paraffin-embedded Human brain using SERPINA9 Polyclonal Antibody at dilution of 1:60



Immunohistochemistry of paraffin-embedded Human cervical cancer using SERPINA9 Polyclonal Antibody at dilution of 1:60

## Preparation & Storage

|                 |  |
|-----------------|--|
| <b>Storage</b>  | Store at -20°C Valid for 12 months. Avoid freeze / thaw cycles.  |
| <b>Shipping</b> | The product is shipped with ice pack, upon receipt, store it immediately at the temperature recommended. |

## Background

Serpin A9 also known as centerin or GCET1 is a protein that in humans is encoded by the SERPINA9 gene located on chromosome 14q32.1.[1] Serpin A9 is a member of the serpin family of serine protease inhibitors. The expression of SERPINA9 is restricted to germinal center B cells and lymphoid malignancies. SERPINA9 is likely to function in vivo in the germinal center as an efficient inhibitor of trypsin-like proteases. Highly expressed in normal germinal center (GC) B-cells and GC B-cell-derived malignancies.

## For Research Use Only