

# Recombinant Human ERP27 Protein (Fc Tag)

Catalog Number:PKSH030673



**Note:** Centrifuge before opening to ensure complete recovery of vial contents.

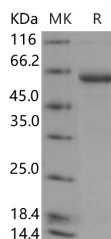
## Description

<b>Synonyms</b>	Endoplasmic Reticulum Resident Protein 27;ER Protein 27;ERp27;ERP27;C12orf46
<b>Species</b>	Human
<b>Expression Host</b>	HEK293 Cells
<b>Sequence</b>	Glu26-Pro269
<b>Accession</b>	Q96DN0
<b>Calculated Molecular Weight</b>	53.7 kDa
<b>Tag</b>	C-mFc

## Properties

<b>Purity</b>	> 84 % as determined by reducing SDS-PAGE.
<b>Endotoxin</b>	< 1.0 EU per µg of the protein as determined by the LAL method.
<b>Storage</b>	Generally, lyophilized proteins are stable for up to 12 months when stored at -20 to -80°C. Reconstituted protein solution can be stored at 4-8°C for 2-7 days. Aliquots of reconstituted samples are stable at < -20°C for 3 months.
<b>Shipping</b>	This product is provided as lyophilized powder which is shipped with ice packs.
<b>Formulation</b>	Lyophilized from sterile PBS, pH 7.4 Normally 5 % - 8 % trehalose, mannitol and 0.01% Tween80 are added as protectants before lyophilization. Please refer to the specific buffer information in the printed manual.
<b>Reconstitution</b>	Please refer to the printed manual for detailed information.

## Data



> 84 % as determined by reducing SDS-PAGE.

## Background

ERP27 contains 1 thioredoxin domain and is a noncatalytic member of the protein disulfide isomerase family. Protein disulfide isomerases (PDIs) constitute a family of structurally related enzymes which catalyze disulfide bonds formation; reduction; or isomerization of newly synthesized proteins in the lumen of the endoplasmic reticulum (ER). They act also as chaperones; and are; therefore; part of a quality-control system for the correct folding of the proteins in the same subcellular compartment. PDI has been found to have moderate effects (25-fold) on the rate of oxidative folding of proteins in vitro. Recombinant Human Protein Disulfide Isomerase is involved in disulphide-bond formation and isomerization; as well as the reduction of disulphide bonds in proteins. Recombinant PDI has been found to have moderate effects (25-fold) on the rate of oxidative folding of proteins in vitro. ERP27 is a widely expressed protein which localizes to the ER and may act as a protease; protein disulfide isomerase; thiol-disulfide oxidase or phospholipase.

## For Research Use Only

A Reliable Research Partner in Life Science and Medicine

Toll-free: 1-888-852-8623

Web: [www.elabscience.com](http://www.elabscience.com)

Tel: 1-832-243-6086

Email: [techsupport@elabscience.com](mailto:techsupport@elabscience.com)

Fax: 1-832-243-6017

# Recombinant Human ERP27 Protein (Fc Tag)

Catalog Number:PKSH030673



ERP27 doesn't contain a CXXC active site motif indicating that it is a catalytically redox-inactive member of the protein disulfide isomerase family.

---

## For Research Use Only

A Reliable Research Partner in Life Science and Medicine

Toll-free: 1-888-852-8623

Web: [www.elabscience.com](http://www.elabscience.com)

Tel: 1-832-243-6086

Email: [techsupport@elabscience.com](mailto:techsupport@elabscience.com)

Fax: 1-832-243-6017