

## Recombinant cGAS Monoclonal Antibody

catalog number: **AN301372L**

**Note:** Centrifuge before opening to ensure complete recovery of vial contents.

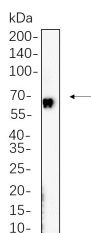
### Description

<b>Reactivity</b>	Human
<b>Immunogen</b>	Recombinant Human cGAS protein
<b>Host</b>	Rabbit
<b>Isotype</b>	IgG, $\kappa$
<b>Clone</b>	B1139
<b>Purification</b>	Protein A
<b>Buffer</b>	PBS, 50% glycerol, 0.05% Proclin 300, 0.05% protein protectant.

### Applications Recommended Dilution

<b>IHC</b>	1:100-1:500
<b>WB</b>	1:1000-1:5000
<b>IF</b>	1:200-1:1000
<b>ELISA</b>	1:5000-1:20000

### Data



Western Blot with Recombinant cGAS Monoclonal Antibody  
at dilution of 1:1000 dilution. Lane A: HT-29 whole cell  
lysate.

**Observed-MW:62 kDa**

**Calculated-MW:62 kDa**

### Preparation & Storage

<b>Storage</b>	Store at -20°C Valid for 12 months. Avoid freeze / thaw cycles.
<b>Shipping</b>	Ice bag

### Background

Enables several functions, including 2',3'-cyclic GMP-AMP synthase activity; molecular condensate scaffold activity; and phosphatidylinositol-4,5-bisphosphate binding activity. Involved in several processes, including defense response to symbiont; intracellular signal transduction; and regulation of defense response. Located in nuclear body; plasma membrane; and site of double-strand break. Is active in cytosol and nucleus.

### For Research Use Only

Toll-free: 1-888-852-8623  
Web: [www.elabscience.com](http://www.elabscience.com)

Tel: 1-832-243-6086  
Email: [techsupport@elabscience.com](mailto:techsupport@elabscience.com)

Fax: 1-832-243-6017

Rev. V1.2