

Recombinant Carbonic Anhydrase II/CA2 Monoclonal Antibody

catalog number: **AN300190P**

Note: Centrifuge before opening to ensure complete recovery of vial contents.

Description

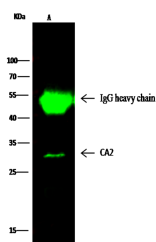
Reactivity	Human
Immunogen	Recombinant Human Carbonic Anhydrase II / CA2 protein
Host	Rabbit
Isotype	IgG
Clone	6C3
Purification	Protein A
Buffer	0.2 µm filtered solution in PBS

Applications

Recommended Dilution

WB	1:10000-1:50000
IP	1-4 µL/mg of lysate

Data



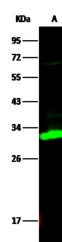
Immunoprecipitation analysis using 2 µL anti-CA2 Monoclonal Antibody and 15 µl of 50 % Protein G agarose.

Western blot was performed from the immunoprecipitate using CA2 Monoclonal Antibody at a dilution of 1:2000.

Lane A: 0.5 mg 293T Whole Cell Lysate

Observed-MW: 29 kDa

Calculated-MW: 29 kDa



Western Blot with Carbonic Anhydrase II / CA2 Monoclonal Antibody at dilution of 1:10000. Lane A: 293T Whole Cell Lysate, Lysates/proteins at 30 µg per lane.

Observed-MW: 29 kDa

Calculated-MW: 29 kDa

Preparation & Storage

Storage	This antibody can be stored at 2°C-8°C for one month without detectable loss of activity. Antibody products are stable for twelve months from date of receipt when stored at -20°C to -80°C. Preservative-Free. Avoid repeated freeze-thaw cycles.
Shipping	Ice bag

Background

The protein encoded by this gene is one of several isozymes of carbonic anhydrase, which catalyzes reversible hydration of carbon dioxide. Defects in this enzyme are associated with osteopetrosis and renal tubular acidosis. Two transcript variants encoding different isoforms have been found for this gene.

For Research Use Only