

## Recombinant Human B-cell Receptor CD22/Siglec-2/CD22 (C-6His) Biotinylated

Catalog Number: PKSH033956

**Note:** Centrifuge before opening to ensure complete recovery of vial contents.

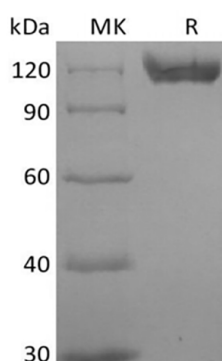
### Description

<b>Species</b>	Human
<b>Source</b>	HEK293 Cells-derived Human Siglec-2;CD22 protein Asp20-Arg687, with an C-terminal His & Avi
<b>Mol_Mass</b>	78.0 kDa
<b>Accession</b>	P20273
<b>Bio-activity</b>	Loaded Biotinylated Human Siglec-2-His-Avi on HIS1K Biosensor, can bind Anti-Human Siglec-2 mAb-Fc with an affinity constant of 0.16 nM as determined in BLI assay.

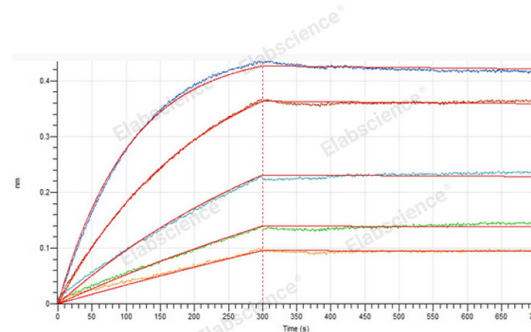
### Properties

<b>Purity</b>	> 95 % as determined by reducing SDS-PAGE.
<b>Endotoxin</b>	< 1.0 EU per µg of the protein as determined by the LAL method.
<b>Storage</b>	Generally, lyophilized proteins are stable for up to 12 months when stored at -20 to -80 °C. Reconstituted protein solution can be stored at 4-8°C for 2-7 days. Aliquots of reconstituted samples are stable at < -20°C for 3 months.
<b>Shipping</b>	This product is provided as lyophilized powder which is shipped with ice packs.
<b>Formulation</b>	Lyophilized from a 0.2 µm filtered solution of PBS, pH 7.4. Normally 5% - 8% trehalose, mannitol and 0.01% Tween 80 are added as protectants before lyophilization. Please refer to the specific buffer information in the printed manual.
<b>Reconstitution</b>	Please refer to the printed manual for detailed information.

### Data



> 95 % as determined by reducing SDS-PAGE.



Loaded Biotinylated Human Siglec-2-His-Avi on HIS1K Biosensor, can bind Anti-Human Siglec-2 mAb-Fc with an affinity constant of 0.16 nM as determined in BLI assay.

### Background

### For Research Use Only

Tel:400-999-2100

Web:[www.elabscience.cn](http://www.elabscience.cn)

Email:[techsupport@elabscience.cn](mailto:techsupport@elabscience.cn)

Rev. V3.3

Siglecs (sialic acid binding Ig-like lectins) are I-type (Ig-type) lectins belonging to the Ig superfamily. They are characterized by an N-terminal Ig-like V-type domain which mediates sialic acid binding, followed by varying numbers of Ig-like C2-type domains. Human Siglec-2, also known as B-cell antigen CD22 or B-lymphocyte cell adhesion molecule (B L-CAM), is a B-cell restricted glycoprotein that is expressed in the cytoplasm of progenitor B and pre-B cells and on the surface of mature B cells. Two distinct human Siglec-2/CD22 cDNAs that arise from differential RNA processing of the same gene have been isolated. Siglec-2/CD22 is an adhesion molecule that preferentially binds alpha 2,6- linked sialic acid on the same (cis) or adjacent (trans) cells. Interaction of CD22 with trans ligands on opposing cells was found to be favored over the binding of ligands in cis.