

## SQRDL Polyclonal Antibody

catalog number: **E-AB-63946**

**Note:** Centrifuge before opening to ensure complete recovery of vial contents.

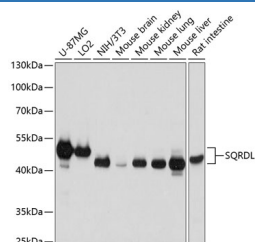
### Description

<b>Reactivity</b>	Human;Mouse;Rat
<b>Immunogen</b>	Recombinant fusion protein of human SQRDL (NP_067022.1).
<b>Host</b>	Rabbit
<b>Isotype</b>	IgG
<b>Purification</b>	Affinity purification
<b>Buffer</b>	Phosphate buffered solution, pH 7.4, containing 0.05% stabilizer and 50% glycerol.

### Applications Recommended Dilution

<b>WB</b>	1:1000-1:2000
-----------	---------------

### Data



Western blot analysis of extracts of various cell lines using SQRDL Polyclonal Antibody at dilution of 1:3000.

**Observed-MW:48 kDa**

**Calculated-MW:49 kDa**

### Preparation & Storage

<b>Storage</b>	Store at -20°C Valid for 12 months. Avoid freeze / thaw cycles.
<b>Shipping</b>	The product is shipped with ice pack, upon receipt, store it immediately at the temperature recommended.

### Background

The protein encoded by this gene may function in mitochondria to catalyze the conversion of sulfide to persulfides, thereby decreasing toxic concentrations of sulfide. Alternative splicing results in multiple transcript variants that encode the same protein.

### For Research Use Only