

Recombinant Human C1QBP Protein (aa 74-282, His Tag)

Catalog Number: PKSH033350

Note: Centrifuge before opening to ensure complete recovery of vial contents.

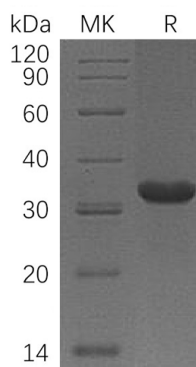
Description

Species	Human
Source	E.coli-derived Human C1QBP protein Leu74-Gln282, with an C-terminal His
Calculated MW	24.9 kDa
Observed MW	34 kDa
Accession	Q07021
Bio-activity	Not validated for activity

Properties

Purity	> 95 % as determined by reducing SDS-PAGE.
Concentration	Subject to label value.
Endotoxin	< 1.0 EU per µg of the protein as determined by the LAL method.
Storage	Store at < -20°C, stable for 6 months. Please minimize freeze-thaw cycles.
Shipping	This product is provided as liquid. It is shipped at frozen temperature with blue ice/ gel packs. Upon receipt, store it immediately at < - 20°C.
Formulation	Supplied as a 0.2 µm filtered solution of 20mM Tris-HCl, 20% Glycerol, 1mM DTT, pH 7.5.

Data



> 95 % as determined by reducing SDS-PAGE.

Background

Complement Component 1Q Subcomponent-Binding Protein (C1QBP) is a nucleus protein that belongs to the MAM33 family. C1QBP is known to bind to the globular heads of C1q molecules and inhibit C1 activation. Mitochondrial C1QBP is a critical mediator of p14ARF-induced apoptosis. C1QBP functions as a chemotactic factor for immature dendritic cells, and migration is mediated through ligation of both C1QBP and cC1qR/CR. C1QBP overexpression successfully blocks mRNA accumulation from the adenovirus major late transcription unit (MLTU) and stimulates RNA polymerase II carboxy-terminal domain phosphorylation in virus-infected cells.

For Research Use Only

Toll-free: 1-888-852-8623
Web: www.elabscience.com

Tel: 1-832-243-6086
Email: techsupport@elabscience.com

Fax: 1-832-243-6017