

Recombinant Human WBP1 Protein (His Tag)

Catalog Number: PKSH033226

Note: Centrifuge before opening to ensure complete recovery of vial contents.

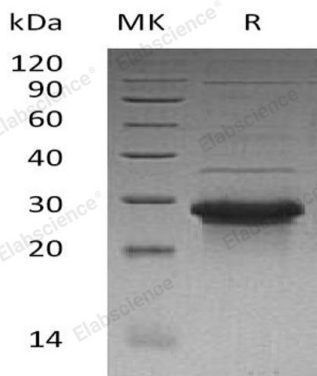
Description

| | |
|----------------------|---|
| Species | Human |
| Source | E.coli-derived Human WBP1 protein Gly170-Pro269, with an N-terminal His |
| Calculated MW | 12.6 kDa |
| Observed MW | 20 kDa |
| Accession | Q96G27 |
| Bio-activity | Not validated for activity |

Properties

| | |
|-----------------------|--|
| Purity | > 90 % as determined by reducing SDS-PAGE. |
| Endotoxin | < 1.0 EU per µg of the protein as determined by the LAL method. |
| Storage | Generally, lyophilized proteins are stable for up to 12 months when stored at -20 to -80 °C. Reconstituted protein solution can be stored at 4-8°C for 2-7 days. Aliquots of reconstituted samples are stable at < -20°C for 3 months. |
| Shipping | This product is provided as lyophilized powder which is shipped with ice packs. |
| Formulation | Lyophilized from a 0.2 µm filtered solution of 20mM PB, 150mM NaCl, pH 7.2. Normally 5% - 8% trehalose, mannitol and 0.01% Tween 80 are added as protectants before lyophilization. |
| | Please refer to the specific buffer information in the printed manual. |
| Reconstitution | Please refer to the printed manual for detailed information. |

Data



> 90 % as determined by reducing SDS-PAGE.

Background

WW Domain-Binding Protein 1 (WBP1) is widely expressed in many tissues, but it is lowly expressed in the lung, placenta, kidney, and liver. WBP1 contains two WW-binding motifs: WW-binding 1 and WW-binding 2 that are involved in mediating protein-protein interactions through the binding of polyproline ligands. The WW-binding domain is composed of 38 to 40 semi-conserved amino acids shared by proteins with diverse functions including structural, regulatory, and signaling proteins. In addition, WBP1 also encodes a ligand of the WW domain of the Yes kinase-associated protein. This function has not been determined.

For Research Use Only