

Recombinant Human Sulfotransferase 4A1/SULT4A1 Protein

Catalog Number: PKSH033087

Note: Centrifuge before opening to ensure complete recovery of vial contents.

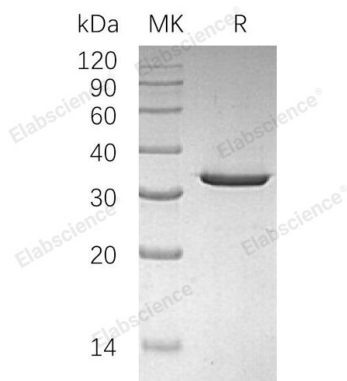
Description

Species	Human
Source	E.coli-derived Human SULT4A1 protein Met 1-Leu284
Calculated MW	33.0 kDa
Observed MW	34 kDa
Accession	Q9BR01
Bio-activity	Not validated for activity

Properties

Purity	> 95 % as determined by reducing SDS-PAGE.
Concentration	Subject to label value.
Endotoxin	< 1.0 EU per µg of the protein as determined by the LAL method.
Storage	Store at < -20°C, stable for 6 months. Please minimize freeze-thaw cycles.
Shipping	This product is provided as liquid. It is shipped at frozen temperature with blue ice/gel packs. Upon receipt, store it immediately at < -20°C.
Formulation	Supplied as a 0.2 µm filtered solution of 20mM PB, 150mM NaCl, pH 7.4.

Data



> 95 % as determined by reducing SDS-PAGE.

Background

Sulfotransferase 4A1 (ST4A1) is a member of the Sulfotransferase 1 family. ST4A1 is highly expressed in the cerebral cortex and frontal lobe, but no expression is detected in the pancreas. ST4A1 is a brain-specific sulfotransferase believed to be involved in the metabolism of neurotransmitters. ST4A1 acts on catecholamines and T4 in a manner that may not involve sulfonation. ST4A1 may have a role in the metabolism of drugs and neurotransmitters in the CNS. In addition, ST4A1 is related to schizophrenia.

For Research Use Only