

Recombinant Human REG3G/PAP-1B Protein (Fc Tag)

Catalog Number: PKSH033541

Note: Centrifuge before opening to ensure complete recovery of vial contents.

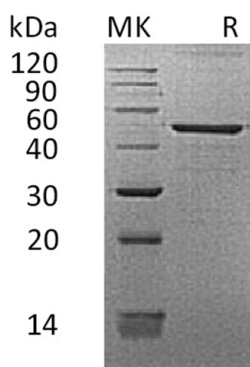
Description

Species	Human
Source	HEK293 Cells-derived Human REG3G/PAP-1B protein Glu27-Asp175, with an C-terminal Fc
Calculated MW	46.5 kDa
Observed MW	40-50 kDa
Accession	Q6UW15
Bio-activity	Not validated for activity

Properties

Purity	> 95 % as determined by reducing SDS-PAGE.
Concentration	Subject to label value.
Endotoxin	< 1.0 EU per µg of the protein as determined by the LAL method.
Storage	Store at < -20°C, stable for 6 months. Please minimize freeze-thaw cycles.
Shipping	This product is provided as liquid. It is shipped at frozen temperature with blue ice/gel packs. Upon receipt, store it immediately at < -20°C.
Formulation	Supplied as a 0.2 µm filtered solution of PBS, pH7.4.

Data



> 95 % as determined by reducing SDS-PAGE.

Background

Pancreatitis-associated protein IB; Regenerating islet-derived protein III-gamma; is a secreted protein which contains 1 C-type lectin domain. It is expressed almost exclusively in the pancreas and also expressed in testis; but not found in small intestine. This protein might be a stress protein involved in the control of bacterial proliferation.