

Recombinant Rat IL-1 β Protein(hIgG1 Fc Tag)

Catalog Number: PDMR100103

Note: Centrifuge before opening to ensure complete recovery of vial contents.

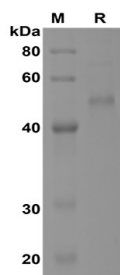
Description

Species	Rat
Source	Mammalian-derived Rat IL-1 β protein Val117-Ser268, with an C-terminal hIgG1 Fc
Calculated MW	52.6 kDa
Observed MW	52 kDa
Accession	Q63264
Bio-activity	Not validated for activity

Properties

Purity	> 95% as determined by reducing SDS-PAGE.
Endotoxin	< 1.0 EU/mg of the protein as determined by the LAL method
Storage	Generally, lyophilized proteins are stable for up to 12 months when stored at -20 to -80 °C. Reconstituted protein solution can be stored at 4-8°C for 2-7 days. Aliquots of reconstituted samples are stable at < -20°C for 3 months.
Shipping	This product is provided as lyophilized powder which is shipped with ice packs.
Formulation	Lyophilized from a 0.2 μ m filtered solution in PBS with 5% Trehalose and 5% Mannitol.
Reconstitution	It is recommended that sterile water be added to the vial to prepare a stock solution of 0.5 mg/mL. Concentration is measured by UV-Vis.

Data



SDS-PAGE analysis of Rat IL-1 β proteins, 2 μ g/lane of Recombinant Rat IL-1 β proteins, was resolved with SDS-PAGE under reducing conditions, showing bands at 52 KD

Background

Interleukin-1 beta(IL1 beta or IL1B) also known as catabolin, is a member of the interleukin 1 cytokine family. IL1 is a pleiotropic cytokine. It is involved in the inflammatory response, cell growth, and tissue repair in the cortex. The IL1 superfamily consists of three members, IL1A(IL1 alpha), IL1B(IL1 beta), and IL1 receptor antagonist(IL1Ra) . In clinical, it has been reported that Interleukin(IL) -1 may influence Th1 / Th2 immune responsiveness and has been implicated in the establishment of a successful pregnancy. Proinflammatory interleukin(IL) -1 gene polymorphisms associated with high levels of IL-1beta activity increase the risk for hypochlorhydria and distal gastric carcinoma. IL1B polymorphisms may be involved in susceptibility to SSc. Moreover, the IL2-384-G allele may be a marker for the limited phenotype of systemic sclerosis(SSc) .