

## PE/Elab Fluor® 594 Anti-Mouse CD106 Antibody[M/K-2.7]

**Catalog Number:** E-AB-F1091P

**Note:** Centrifuge before opening to ensure complete recovery of vial contents.

### Description

<b>Reactivity</b>	Mouse
<b>Host</b>	Rat
<b>Isotype</b>	Rat IgG1, κ
<b>Clone No.</b>	M/K-2.7
<b>Isotype Control</b>	PE/Elab Fluor® 594 Rat IgG1, κ Isotype Control[HRPN] [Product E-AB-F09822P]
<b>Conjugation</b>	PE/Elab Fluor® 594
<b>Conjugation Information</b>	PE/Elab Fluor® 594 is designed to be excited by the blue (488 nm), Green (532 nm) and yellow-green (561 nm) lasers and detected using an optical filter centered near 620 nm (e.g., a 610/20 nm bandpass filter).
<b>Storage Buffer</b>	Phosphate buffered solution, pH 7.2, containing 0.09% sodium azide and 1% BSA.

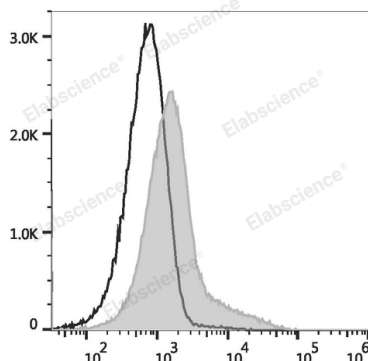
### Applications

### Recommended usage

**FCM**

Each lot of this antibody is quality control tested by flow cytometric analysis. **The amount of the reagent is suggested to be used 5 µL of antibody per test (million cells in 100 µL staining volume or per 100 µL of whole blood).** Please check your vial before the experiment. Since applications vary, the appropriate dilutions must be determined for individual use.

### Data



C57BL/6 murine bone marrow cells are stained with PE/Elab

Fluor® 594 Anti-Mouse CD106 Antibody (filled gray histogram) or PE/Elab Fluor® 594 Rat IgG1, κ Isotype Control (empty black histogram).

### Preparation & Storage

<b>Storage</b>	Keep as concentrated solution. This product can be stored at 2-8°C for 12 months. Please protected from prolonged exposure to light and do not freeze.
<b>Shipping</b>	Ice bag

### Antigen Information

<b>Alternate Names</b>	CD106;V-CAM 1;VCAM-1;Vascular cell adhesion protein 1;Vcam 1
<b>Uniprot ID</b>	P29533
<b>Gene ID</b>	22329

### For Research Use Only

## Background

CD106 is a 110 kD glycosylphosphatidylinositol (GPI)-linked transmembrane protein, also known as VCAM-1 and INCAM-110. It is constitutively expressed on bone marrow stromal cells, myeloid progenitors, splenic dendritic cells, activated endothelial cells, as well as some lymphocytes. CD106 expression can be upregulated on endothelial cells by inflammatory cytokines. CD106 is involved in adhesion and acts as a counter-receptor for VLA-4 ( $\alpha 4/\beta 1$  integrin) and LPAM-1 ( $\alpha 4/\beta 7$  integrin).