

# NCEH1 Polyclonal Antibody

catalog number: E-AB-10691

**Note:** Centrifuge before opening to ensure complete recovery of vial contents.

## Description

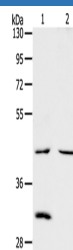
<b>Reactivity</b>	Human;Mouse;Rat
<b>Immunogen</b>	Recombinant protein of human NCEH1
<b>Host</b>	Rabbit
<b>Isotype</b>	IgG
<b>Purification</b>	Affinity purification
<b>Conjugation</b>	Unconjugated
<b>buffer</b>	Phosphate buffered solution, pH 7.4, containing 0.05% stabilizer and 50% glycerol.

## Applications

## Recommended Dilution

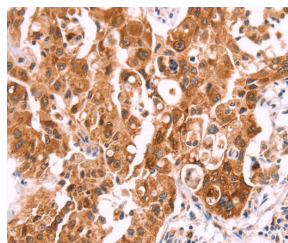
<b>WB</b>	1:1000-1:5000
<b>IHC</b>	1:100-1:300

## Data

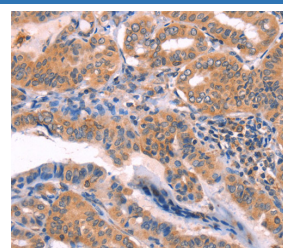


Western Blot analysis of Mouse kidney and heart tissue using NCEH1 Polyclonal Antibody at dilution of 1:1300

**Calculated-MV:46 kDa**



Immunohistochemistry of paraffin-embedded Human lung cancer using NCEH1 Polyclonal Antibody at dilution of 1:80



Immunohistochemistry of paraffin-embedded Human thyroid cancer using NCEH1 Polyclonal Antibody at dilution of 1:80

## Preparation & Storage

<b>Storage</b>	Store at -20°C Valid for 12 months. Avoid freeze / thaw cycles.
<b>Shipping</b>	The product is shipped with ice pack, upon receipt, store it immediately at the temperature recommended.

## Background

Neutral cholesterol ester hydrolase 1 (NCEH) also known as arylacetamide deacetylase-like 1 (AADACL1) or KIAA1363 is an enzyme that in humans is encoded by the NCEH1 gene. NCEH is an enzyme located in the endoplasmic reticulum. NCEH hydrolyzes 2-acetyl monoalkylglycerol ether, as part of an enzymatic pathway regulating the levels of platelet activating factor and lysophospholipids that may be involved in cancer development.

## For Research Use Only