

Recombinant ERCC1 Monoclonal Antibody

catalog number: **AN301517L**

Note: *Centrifuge before opening to ensure complete recovery of vial contents.*

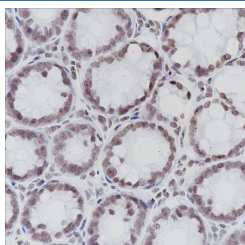
Description

Reactivity	Human;Rat;Mouse
Immunogen	Recombinant human ERCC1 fragment
Host	Rabbit
Isotype	IgG, κ
Clone	A216
Purification	Protein A purified
Buffer	PBS, 50% glycerol, 0.05% Proclin 300, 0.05% protein protectant.

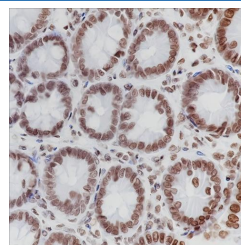
Applications Recommended Dilution

IHC	1:200-1:1000
------------	--------------

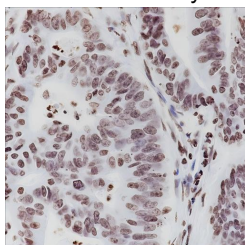
Data



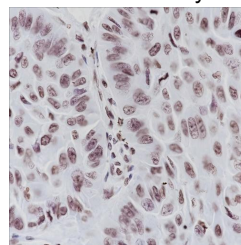
Immunohistochemistry of paraffin-embedded Mouse colon using ERCC1 Monoclonal Antibody at dilution of 1:1000.



Immunohistochemistry of paraffin-embedded Rat colon using ERCC1 Monoclonal Antibody at dilution of 1:1000.



Immunohistochemistry of paraffin-embedded Human colon cancer using ERCC1 Monoclonal Antibody at dilution of 1:1000.



Immunohistochemistry of paraffin-embedded Human lung squamous carcinoma using ERCC1 Monoclonal Antibody at dilution of 1:1000.

Preparation & Storage

Storage	Store at -20°C Valid for 12 months. Avoid freeze / thaw cycles.
Shipping	Ice bag

Background

Non-catalytic component of a structure-specific DNA repair endonuclease responsible for the 5'-incision during DNA repair. Participates in the processing of anaphase bridge-generating DNA structures, which consist in incompletely processed DNA lesions arising during S or G2 phase, and can result in cytokinesis failure.

For Research Use Only

Toll-free: 1-888-852-8623
Web: www.elabscience.com

Tel: 1-832-243-6086
Email: techsupport@elabscience.com

Fax: 1-832-243-6017

Rev. V1.0