

OTX1 Polyclonal Antibody

catalog number: **E-AB-52608**

Note: Centrifuge before opening to ensure complete recovery of vial contents.

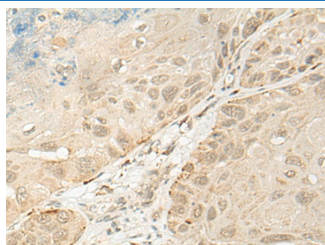
Description

| | |
|---------------------|--|
| Reactivity | Human;Mouse;Rat |
| Immunogen | Fusion protein of human OTX1 |
| Host | Rabbit |
| Isotype | IgG |
| Purification | Antigen affinity purification |
| Buffer | Phosphate buffered solution, pH 7.4, containing 0.05% stabilizer and 50% glycerol. |

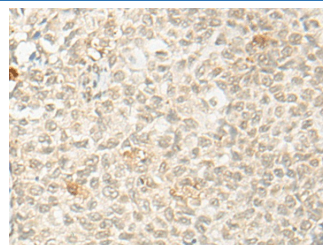
Applications Recommended Dilution

| | |
|------------|------------|
| IHC | 1:30-1:150 |
|------------|------------|

Data



Immunohistochemistry of paraffin-embedded Human esophagus cancer tissue using OTX1 Polyclonal Antibody at dilution of 1:30(×200)



Immunohistochemistry of paraffin-embedded Human ovarian cancer tissue using OTX1 Polyclonal Antibody at dilution of 1:30(×200)

Preparation & Storage

| | |
|-----------------|--|
| Storage | Store at -20°C Valid for 12 months. Avoid freeze / thaw cycles. |
| Shipping | The product is shipped with ice pack, upon receipt, store it immediately at the temperature recommended. |

Background

This gene encodes a member of the bicoid sub-family of homeodomain-containing transcription factors. The encoded protein acts as a transcription factor and may play a role in brain and sensory organ development. A similar protein in mouse is required for proper brain and sensory organ development and can cause epilepsy. Alternative splicing results in multiple transcript variants.

For Research Use Only