

RETN Polyclonal Antibody

catalog number: E-AB-40596

Note: Centrifuge before opening to ensure complete recovery of vial contents.

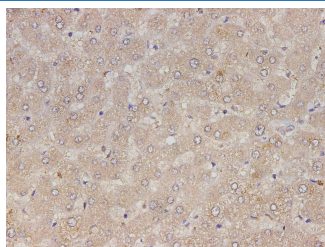
Description

Reactivity	Human
Immunogen	Recombinant Human RETN protein expressed by E.coli
Host	Rabbit
Isotype	IgG
Purification	Antigen Affinity Purification
Buffer	PBS with 0.05% proclin 300, 1% protective protein and 50% glycerol,pH7.4

Applications

Applications	Recommended Dilution
IHC	1:50-1:150

Data



Immunohistochemistry of paraffin-embedded Human liver cancer tissue using RETN Polyclonal Antibody at dilution of 1:150(×400)

Preparation & Storage

Storage	Store at -20°C Valid for 12 months. Avoid freeze / thaw cycles.
Shipping	The product is shipped with ice pack,upon receipt,store it immediately at the temperature recommended.

Background

TISSUE SPECIFICITY: Expressed in white adipose tissue (at protein level) (PubMed:11201732). Widely expressed, with particularly strong expression in lung, bone marrow, breast and peripheral blood (PubMed:15248836). Expressed strongly in bone marrow and at lower levels in lung, but not detected in other tissues (PubMed:15064728). Isoform 2 is detected in adipose tissue, bone marrow, brain, lung, peripheral blood, placenta and thymus

For Research Use Only