

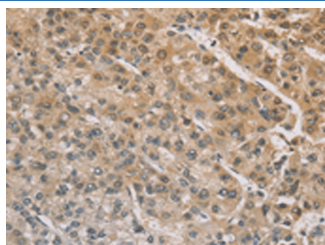
## ZIC2 Polyclonal Antibody

catalog number: E-AB-53238

**Note:** Centrifuge before opening to ensure complete recovery of vial contents.

| Description  |  |
|--------------|--|
| Reactivity   | Human;Mouse  |
| Immunogen    | Synthetic peptide of human ZIC2  |
| Host         | Rabbit   |
| Isotype      | IgG  |
| Purification | Antigen affinity purification  |
| Conjugation  | Unconjugated   |
| Buffer       | Phosphate buffered solution, pH 7.4, containing 0.05% stabilizer and 50% glycerol. |
| Applications | Recommended Dilution   |
| IHC          | 1:50-1:200   |

### Data



Immunohistochemistry of paraffin-embedded Human liver cancer tissue using ZIC2 Polyclonal Antibody at dilution of 1:100(×200)

| Preparation & Storage |  |
|-----------------------|--|
| Storage               | Store at -20°C Valid for 12 months. Avoid freeze / thaw cycles.  |
| Shipping              | The product is shipped with ice pack, upon receipt, store it immediately at the temperature recommended. |

### Background

This gene encodes a member of the ZIC family of C2H2-type zinc finger proteins. This protein functions as a transcriptional repressor and may regulate tissue specific expression of dopamine receptor D1. Mutations in this gene cause holoprosencephaly type 5. Holoprosencephaly is the most common structural anomaly of the human brain. A polyhistidine tract polymorphism in this gene may be associated with increased risk of neural tube defects. This gene is closely linked to a gene encoding zinc finger protein of the cerebellum 5, a related family member on chromosome 13.

### For Research Use Only