

## Dkk-1 Polyclonal Antibody(Capture/Detector)

**catalog number: AN004660P**

**Note:** Centrifuge before opening to ensure complete recovery of vial contents.

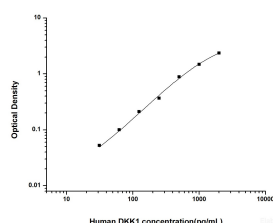
### Description

<b>Reactivity</b>	Human
<b>Immunogen</b>	Recombinant Human Dkk-1 Protein expressed by Mammalian
<b>Host</b>	Rabbit
<b>Isotype</b>	Rabbit IgG
<b>Purification</b>	Antigen Affinity Purification
<b>Buffer</b>	Phosphate buffered solution, pH 7.2, containing 0.05% proclin 300.

### Applications Recommended Dilution

<b>ELISA Capture</b>	2-8 µg/mL
<b>ELISA Detector</b>	0.1-0.4 µg/mL

### Data



Sandwich ELISA-Recombinant Human Dkk-1 Protein standard curve. Background subtracted standard curve using Anti-Dkk-1 antibody(AN004660P)(Capture), Anti-Dkk-1 antibody(AN004660P)(Detector). The reference range value is 31.25~2000 pg/mL for human.

### Preparation & Storage

<b>Storage</b>	Store at 4°C valid for 12 months or -20°C valid for long term storage, avoid freeze / thaw cycles.
<b>Shipping</b>	The product is shipped with ice pack, upon receipt, store it immediately at the temperature recommended.

### Background

This gene encodes a protein that is a member of the dickkopf family. It is a secreted protein with two cysteine rich regions and is involved in embryonic development through its inhibition of the WNT signaling pathway. Elevated levels of DKK1 in bone marrow plasma and peripheral blood is associated with the presence of osteolytic bone lesions in patients with multiple myeloma.

### For Research Use Only