

beta Tubulin Monoclonal Antibody

catalog number: AN005310L

Note: Centrifuge before opening to ensure complete recovery of vial contents.

Description

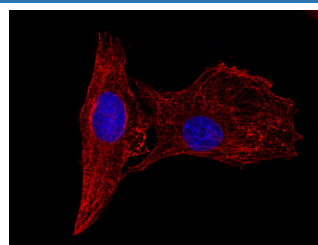
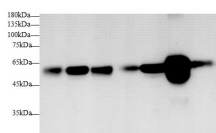
Reactivity	Human;Mouse;Rat;Zebrafish
Immunogen	Recombinant human TUBB protein by E.coli
Host	Mouse
Isotype	IgG
Clone	2E8-2
Purification	Protein A/G Purification
Conjugation	Unconjugated
buffer	PBS with 0.05% proclin 300, 1% protective protein and 50% glycerol,pH7.4

Applications

Recommended Dilution

WB	1:2000-1:4000
IF	1:200-1:400

Data



Western blot with Anti beta Tubulin Monoclonal Antibody at dilution of 1:3000. Lane 1: HT-29 cell lysate, Lane 2: Jurkat cell lysate, Lane 3: 293T cell lysate, Lane 4: Raw264.7 cell lysate, Lane 5: C6 cell lysate, Lane 6: Rat brain tissue lysate, Lane 7: Zebrafish tissue lysate.

Observed-MV:55 kDa

Calculated-MV:55 kDa

Immunofluorescence analysis of U-2 OS cells using beta Tubulin Monoclonal Antibody at dilution of 1:200.

Preparation & Storage

Storage	Store at -20°C Valid for 12 months. Avoid freeze / thaw cycles.
Shipping	The product is shipped with ice pack, upon receipt, store it immediately at the temperature recommended.

Background

In eukaryotes there are six members of the tubulin superfamily. α - and β -tubulins polymerize into microtubules, a major component of the eukaryotic cytoskeleton. Microtubules function in many essential cellular processes, including mitosis. Both α and β tubulins have a mass of around 50 kDa. Tubulin was long thought to be specific to eukaryotes. Beta-tubulin gene is commonly used as a loading control for western blot.

For Research Use Only