

## AF/LE Purified Anti-Human TCR $\gamma/\delta$ Antibody[B1]

catalog number: E-AB-F11450

**Note:** Centrifuge before opening to ensure complete recovery of vial contents.

### Description

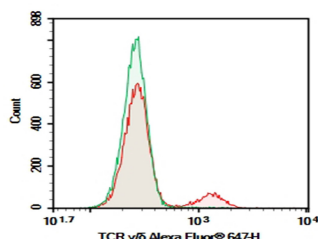
<b>Reactivity</b>	Human
<b>Immunogen</b>	Recombinant Human TCR $\gamma/\delta$ protein
<b>Host</b>	Mouse
<b>Isotype</b>	Mouse IgG1, $\kappa$
<b>Clone</b>	B1
<b>Purification</b>	>98%, Protein A/G purified
<b>Conjugation</b>	None (AF/LE)
<b>Buffer</b>	Sterile PBS, pH 7.2. < 1.0 EU per mg of the antibody as determined by the LAL method

### Applications

### Recommended Dilution

<b>FCM</b>	2 $\mu\text{g/mL}$ ( $1 \times 10^5$ - $5 \times 10^5$ cells)
------------	---

### Data



Human peripheral blood lymphocytes were stained with 0.2  $\mu\text{g}$  AF/LE Purified Anti-Human TCR $\gamma/\delta$  Antibody[B1] (Right) and 0.2  $\mu\text{g}$  Mouse IgG1,  $\kappa$  Isotype Control (Left), followed by Alexa Fluor® 647-conjugated Goat Anti-Mouse IgG Secondary Antibody.

### Preparation & Storage

**Storage** Store at 4°C valid for 12 months or -20°C valid for long term storage, avoid freeze / thaw cycles. This preparation contains no preservatives, thus it should be handled under aseptic conditions.

**Shipping** Ice bag

### Background

T cell receptor (TCR) is a heterodimer consisting of an  $\alpha$  and a  $\beta$  chain (TCR  $\alpha/\beta$ ) or a  $\gamma$  and a  $\delta$  chain (TCR  $\gamma/\delta$ ). TCR  $\gamma/\delta$  is involved in the recognition of certain bacterial, self-CD1 molecule, and tumor antigens bound to MHC class I. The  $\gamma/\delta$  TCR associates with CD3 and is expressed on a subset of T cells found in the thymus, the intestinal epithelium, and the peripheral lymphoid tissues and peritoneum. Most  $\gamma/\delta$  T cells are CD4<sup>-</sup>/CD8<sup>-</sup>, some are CD8<sup>+</sup>. T cells expressing the  $\gamma/\delta$  TCR have been shown to play a role in oral tolerance, innate immune response for some tumor cells, and autoimmune disease. It has been reported that  $\gamma/\delta$  T cells also play a principal role in antigen presentation.

### For Research Use Only