

VSNL1 Polyclonal Antibody

catalog number: E-AB-53201

Note: Centrifuge before opening to ensure complete recovery of vial contents.

Description

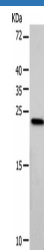
Reactivity	Human;Mouse;Rat
Immunogen	Synthetic peptide of human VSNL1
Host	Rabbit
Isotype	IgG
Purification	Antigen affinity purification
Conjugation	Unconjugated
buffer	Phosphate buffered solution, pH 7.4, containing 0.05% stabilizer and 50% glycerol.

Applications

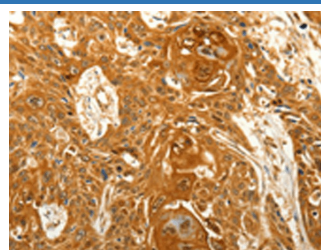
Recommended Dilution

WB	1:1000-1:3000
IHC	1:50-1:200

Data



Western blot analysis of Hela cells using VSNL1 Polyclonal Antibody at dilution of 1:900
Observed-MV: Refer to figures
Calculated-MV: 22 kDa



Immunohistochemistry of paraffin-embedded Human esophagus cancer tissue using VSNL1 Polyclonal Antibody at dilution of 1:25 (x200)

Preparation & Storage

Storage	Store at -20°C Valid for 12 months. Avoid freeze / thaw cycles.
Shipping	The product is shipped with ice pack, upon receipt, store it immediately at the temperature recommended.

Background

This gene is a member of the visinin/recoverin subfamily of neuronal calcium sensor proteins. The encoded protein is strongly expressed in granule cells of the cerebellum where it associates with membranes in a calcium-dependent manner and modulates intracellular signaling pathways of the central nervous system by directly or indirectly regulating the activity of adenylyl cyclase. Alternatively spliced transcript variants have been observed, but their full-length nature has not been determined.

For Research Use Only