

Galectin 3 Monoclonal Antibody

Catalog Number: E-AB-22006



Note: Centrifuge before opening to ensure complete recovery of vial contents.

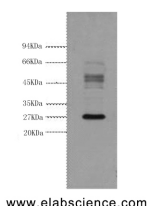
Description

Reactivity	Human
Immunogen	Synthetic Peptide
Host	Mouse
Isotype	IgG
Clone	Clone:1A2
Purification	Protein A purification
Conjugation	Unconjugated
Formulation	PBS with 0.02% sodium azide and 50% glycerol pH 7.4.

Applications Recommended Dilution

WB	1:1000-1:3000
IHC	1:100-1:300
IF	1:100-200

Data

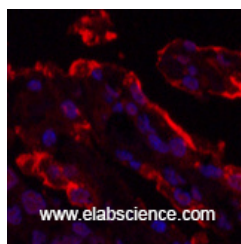


Western Blot analysis of HeLa cells using Galectin 3 Monoclonal Antibody at dilution of 1:3000.

Observed MW:26kDa
Calculated Mw:26kDa



Immunohistochemistry of paraffin-embedded Human thyroid tissue using Galectin 3 Monoclonal Antibody at dilution of 1:200.



Immunofluorescence analysis of Human lung cancer tissue using Galectin 3 Monoclonal Antibody at dilution of 1:200.

Preparation & Storage

Storage Store at -20°C. Avoid freeze / thaw cycles.

Background

For Research Use Only

A Reliable Research Partner in Life Science and Medicine

Toll-free: 1-888-852-8623

Web: www.elabscience.com

Tel: 1-832-243-6086

Email: techsupport@elabscience.com

Fax: 1-832-243-6017

Galectin 3 Monoclonal Antibody

Catalog Number: E-AB-22006



Galactose-specific lectin which binds IgE. May mediate with the alpha-3, beta-1 integrin the stimulation by CSPG4 of endothelial cells migration. Together with DMBT1, required for terminal differentiation of columnar epithelial cells during early embryogenesis.

For Research Use Only

A Reliable Research Partner in Life Science and Medicine

Toll-free: 1-888-852-8623

Tel: 1-832-243-6086

Fax: 1-832-243-6017

Web: www.elabscience.com

Email: techsupport@elabscience.com