

SLC25A4 Polyclonal Antibody

catalog number: E-AB-12952

Note: Centrifuge before opening to ensure complete recovery of vial contents.

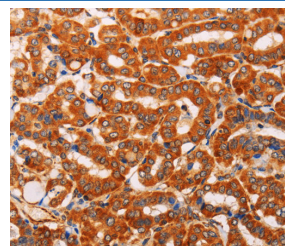
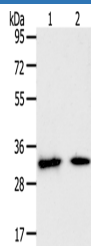
Description

Reactivity	Human;Mouse;Rat
Immunogen	Synthetic peptide of human SLC25A4
Host	Rabbit
Isotype	IgG
Purification	Affinity purification
Buffer	Phosphate buffered solution, pH 7.4, containing 0.05% stabilizer and 50% glycerol.

Applications Recommended Dilution

WB	1:500-1:2000
IHC	1:50-1:200

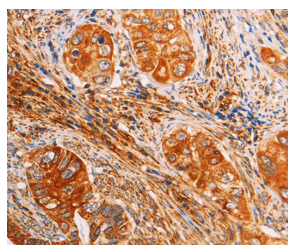
Data



Western Blot analysis of Mouse heart and muscle tissue using Immunohistochemistry of paraffin-embedded Human thyroid cancer using SLC25A4 Polyclonal Antibody at dilution of 1:400

Calculated-MW:33 kDa

1:40



Immunohistochemistry of paraffin-embedded Human cervical cancer using SLC25A4 Polyclonal Antibody at dilution of

1:40

Preparation & Storage

Storage	Store at -20°C Valid for 12 months. Avoid freeze / thaw cycles.
Shipping	The product is shipped with ice pack, upon receipt, store it immediately at the temperature recommended.

Background

This gene is a member of the mitochondrial carrier subfamily of solute carrier protein genes. The product of this gene functions as a gated pore that translocates ADP from the mitochondrial matrix into the cytoplasm. The protein forms a homodimer embedded in the inner mitochondria membrane. Mutations in this gene have been shown to result in autosomal dominant progressive external ophthalmoplegia and familial hypertrophic cardiomyopathy.

For Research Use Only