

Recombinant Human SIGLEC5 Protein (His &Flag &Fc)

Catalog Number: PKSH033530

Note: Centrifuge before opening to ensure complete recovery of vial contents.

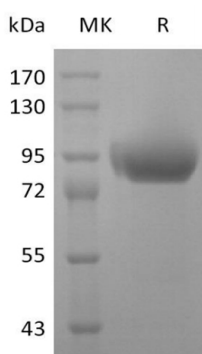
Description

Species	Human
Source	HEK293 Cells-derived Human SIGLEC5 protein Glu17-Thr434, with an C-terminal His & Flag & Fc
Calculated MW	74.1 kDa
Observed MW	90-110 kDa
Accession	O15389
Bio-activity	Not validated for activity

Properties

Purity	> 95 % as determined by reducing SDS-PAGE.
Endotoxin	< 1.0 EU per µg of the protein as determined by the LAL method.
Storage	Generally, lyophilized proteins are stable for up to 12 months when stored at -20 to -80 °C. Reconstituted protein solution can be stored at 4-8°C for 2-7 days. Aliquots of reconstituted samples are stable at < -20°C for 3 months.
Shipping	This product is provided as lyophilized powder which is shipped with ice packs.
Formulation	Lyophilized from a 0.2 µm filtered solution of PBS, pH 7.4. Normally 5% - 8% trehalose, mannitol and 0.01% Tween 80 are added as protectants before lyophilization.
Reconstitution	Please refer to the specific buffer information in the printed manual. Please refer to the printed manual for detailed information.

Data



> 95 % as determined by reducing SDS-PAGE.

Background

For Research Use Only

Toll-free: 1-888-852-8623
Web: www.elabscience.com

Tel: 1-832-243-6086
Email: techsupport@elabscience.com

Fax: 1-832-243-6017

Human Siglec-5 are I-type (Ig-type) lectins belonging to the Ig superfamily; They are characterized by an N-terminal Ig-like V-type domain which mediates sialic acid binding; followed by varying numbers of Ig-like C2-type domains. SIGLEC5 has also been designated CD170; they are expressed by monocytic or myeloid lineage cells; and also found at high levels in peripheral blood leukocytes; spleen; bone marrow and at lower levels in lymph node; lung; appendix; placenta; pancreas and thymus. SIGLEC5 are expressed by monocytes and neutrophils but absent from leukemic cell lines representing early stages of myelomonocytic differentiation. Siglec5 to 11 share a high degree of sequence similarity with CD33/Siglec3 both in their extracellular and intracellular regions. They are collectively referred to as CD33-related Siglecs. One remarkable feature of the CD33-related Siglecs is their differential expression pattern within the hematopoietic system. This fact; together with the presence of two conserved immunoreceptor tyrosine-based inhibition motifs (ITIMs) in their cytoplasmic tails; suggests that CD33-related Siglecs are involved in the regulation of cellular activation within the immune system.