

c-Fos Monoclonal Antibody

catalog number: E-AB-70204

Note: Centrifuge before opening to ensure complete recovery of vial contents.

Description

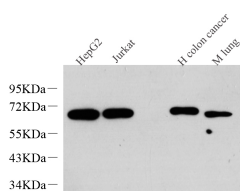
| | |
|---------------------|---|
| Reactivity | Human;Mouse;Rat |
| Immunogen | KLH conjugated Synthetic peptide corresponding to Mouse c-FOS |
| Host | Mouse |
| Isotype | IgG |
| Clone | 4B4F11 |
| Purification | Affinity purification |
| Buffer | Phosphate buffered solution, pH 7.4, containing 0.05% stabilizer, 1% protein protectant and 50% glycerol. |

Applications

Recommended Dilution

| | |
|------------|--------------|
| WB | 1:500-1:2000 |
| IHC | 1:500-1:2000 |
| IF | 1:200-1:1000 |

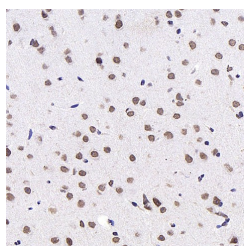
Data



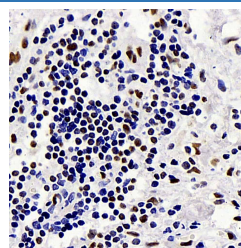
Western Blot analysis of various samples using c-Fos Monoclonal Antibody at dilution of 1:1000.

Observed-MW:62 kDa

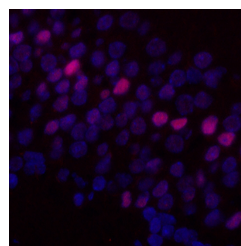
Calculated-MW:62 kDa



Immunohistochemistry analysis of paraffin-embedded mouse brain using c-Fos Monoclonal Antibody at dilution of 1:1000.



Immunohistochemistry analysis of paraffin-embedded human gallbladder using c-Fos Monoclonal Antibody at dilution of 1:1000.



Immunofluorescence analysis of paraffin-embedded rat brain using c-Fos Monoclonal Antibody at dilution of 1:400.

Preparation & Storage

| | |
|-----------------|--|
| Storage | Store at -20°C Valid for 12 months. Avoid freeze / thaw cycles. |
| Shipping | The product is shipped with ice pack, upon receipt, store it immediately at the temperature recommended. |

Background

For Research Use Only

The Fos gene family consists of 4 members: FOS, FOSB, FOSL1, and FOSL2. These genes encode leucine zipper proteins that can dimerize with proteins of the JUN family, thereby forming the transcription factor complex AP-1. As such, the FOS proteins have been implicated as regulators of cell proliferation, differentiation, and transformation. In some cases, expression of the FOS gene has also been associated with apoptotic cell death.