

## GAPDH Monoclonal Antibody

**catalog number:** AN005280L

**Note:** Centrifuge before opening to ensure complete recovery of vial contents.

### Description

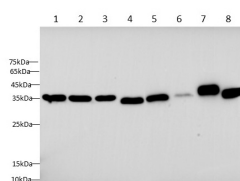
<b>Reactivity</b>	Human;Mouse;Rat
<b>Immunogen</b>	Recombinant human GAPDH protein expressed by E.coli
<b>Host</b>	Mouse
<b>Isotype</b>	IgM
<b>Clone</b>	7B8
<b>Purification</b>	Protein A/G Purification
<b>Buffer</b>	PBS with 0.05% Proclin300, 1% protective protein and 50% glycerol, pH7.4

### Applications

### Recommended Dilution

<b>WB</b>	1:2000-1:4000
<b>IHC</b>	1:200-1:400

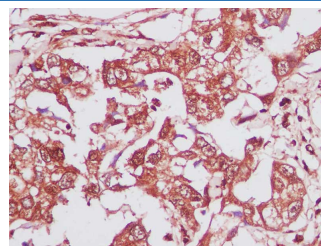
### Data



Western blot with Anti GAPDH Monoclonal Antibody at dilution of 1:3000. Lane 1: HeLa cell lysate, Lane 2: MCF-7 cell lysate, Lane 3: Hep G2 cell lysate, Lane 4: Raw264.7 cell lysate, Lane 5: Mouse brain tissue lysate, Lane 6: Rat lung tissue lysate, Lane 7: Rat brain lysate, Lane 8: C6 cell lysate.

**Observed-MW:36 kDa**

**Calculated-MW:36 kDa**



Immunohistochemistry of paraffin-embedded Human breast cancer using GAPDH Monoclonal Antibody at dilution of 1:600.

### Preparation & Storage

<b>Storage</b>	Store at -20°C Valid for 12 months. Avoid freeze / thaw cycles.
<b>Shipping</b>	The product is shipped with ice pack, upon receipt, store it immediately at the temperature recommended.

### Background

GAPDH is an enzyme of 37kDa that catalyzes the sixth step of glycolysis and thus serves to break down glucose for energy and carbon molecules. Because the GAPDH gene is often stably and constitutively expressed at high levels in most tissues and cells, it is commonly used as a loading control for western blot and as a control for qPCR.

### For Research Use Only