

GOLGA7 Polyclonal Antibody

Catalog Number: E-AB-18893



Note: Centrifuge before opening to ensure complete recovery of vial contents.

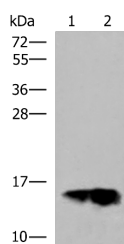
Description

Reactivity	Human, Mouse, Rat
Immunogen	Fusion protein of human GOLGA7
Host	Rabbit
Isotype	IgG
Purification	Antigen affinity purification
Conjugation	Unconjugated
Formulation	PBS with 0.05% NaN ₃ and 40% Glycerol, pH7.4

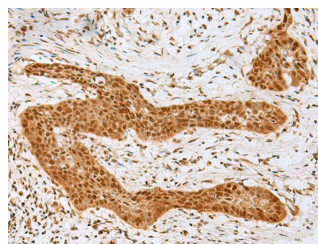
Applications Recommended Dilution

WB	1:1000-1:5000
IHC	1:50-1:300
ELISA	1:5000-1:10000

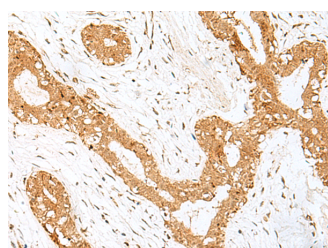
Data



Western blot analysis of Human plasma solution and Human placenta tissue lysates using GOLGA7 Polyclonal Antibody at dilution of 1:600
Observed MW: Refer to figures
Calculated Mw: 16 kDa



Immunohistochemistry of paraffin-embedded Human esophagus cancer tissue using GOLGA7 Polyclonal Antibody at dilution of 1:40 (×200)



Immunohistochemistry of paraffin-embedded Human breast cancer tissue using GOLGA7 Polyclonal Antibody at dilution of 1:40 (×200)

Preparation & Storage

Storage Store at -20°C. Avoid freeze / thaw cycles.

Background

For Research Use Only

A Reliable Research Partner in Life Science and Medicine

Toll-free: 1-888-852-8623

Web: www.elabscience.com

Tel: 1-832-243-6086

Email: techsupport@elabscience.com

Fax: 1-832-243-6017

GOLGA7 Polyclonal Antibody

Catalog Number: E-AB-18893



GOLGA7 (Golgin A7) is a Protein Coding gene. Among its related pathways are Innate Immune System. An important paralog of this gene is GOLGA7B.

For Research Use Only

A Reliable Research Partner in Life Science and Medicine

Toll-free: 1-888-852-8623

Tel: 1-832-243-6086

Fax: 1-832-243-6017

Web: www.elabscience.com

Email: techsupport@elabscience.com