

CDT1 Polyclonal Antibody

catalog number: E-AB-17785

Note: Centrifuge before opening to ensure complete recovery of vial contents.

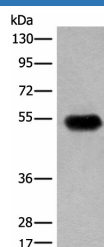
Description

Reactivity	Human
Immunogen	Synthetic peptide of human CDT1
Host	Rabbit
Isotype	IgG
Purification	Antigen affinity purification
Conjugation	Unconjugated
buffer	Phosphate buffered solution, pH 7.4, containing 0.05% stabilizer and 50% glycerol.

Applications Recommended Dilution

WB	1:500-1:2000
IHC	1:30-1:150

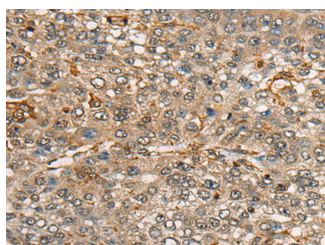
Data



Western blot analysis of Human fetal brain tissue lysate using CDT1 Polyclonal Antibody at dilution of 1:400

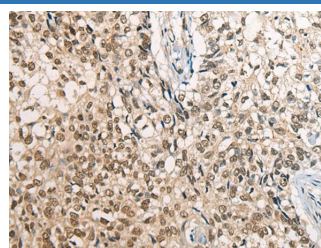
Observed-MV: Refer to figures

Calculated-MV: 60 kDa



Immunohistochemistry of paraffin-embedded Human liver cancer tissue using CDT1 Polyclonal Antibody at dilution of

1:45 (x200)



Immunohistochemistry of paraffin-embedded Human lung cancer tissue using CDT1 Polyclonal Antibody at dilution of

1:45 (x200)

Preparation & Storage

Storage	Store at -20°C Valid for 12 months. Avoid freeze / thaw cycles.
Shipping	The product is shipped with ice pack, upon receipt, store it immediately at the temperature recommended.

Background

The protein encoded by this gene is involved in the formation of the pre-replication complex that is necessary for DNA replication. The encoded protein can bind geminin, which prevents replication and may function to prevent this protein from initiating replication at inappropriate origins. Phosphorylation of this protein by cyclin A-dependent kinases results in degradation of the protein.

For Research Use Only