

# CK-16 Monoclonal Antibody

catalog number: E-AB-22019

**Note:** Centrifuge before opening to ensure complete recovery of vial contents.

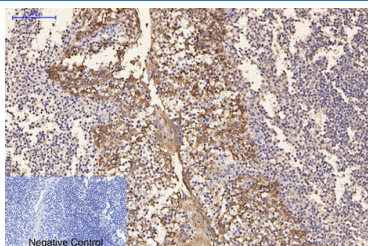
## Description

<b>Reactivity</b>	Human;Mouse;Rat
<b>Immunogen</b>	Synthetic Peptide
<b>Host</b>	Mouse
<b>Isotype</b>	IgG
<b>Clone</b>	3H4
<b>Purification</b>	Protein A purification
<b>Conjugation</b>	Unconjugated
<b>buffer</b>	Phosphate buffered solution, pH 7.4, containing 0.05% stabilizer, 0.5% protein protectant and 50% glycerol.

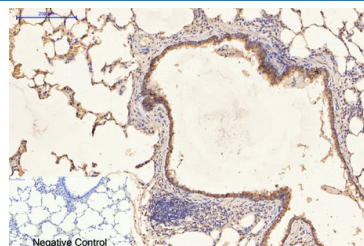
## Applications

Applications	Recommended Dilution
<b>IHC</b>	1:100-1:300
<b>IF</b>	1:50-200

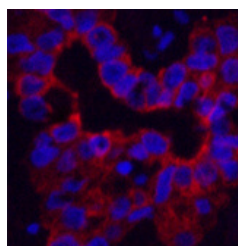
## Data



Immunohistochemistry of paraffin-embedded Human tonsil tissue using CK-16 Monoclonal Antibody at dilution of 1:200.



Immunohistochemistry of paraffin-embedded Rat lung tissue using CK-16 Monoclonal Antibody at dilution of 1:200.



Immunofluorescence analysis of Human liver cancer tissue using CK-16 Monoclonal Antibody at dilution of 1:200.

## Preparation & Storage

<b>Storage</b>	Store at -20°C Valid for 12 months. Avoid freeze / thaw cycles.
<b>Shipping</b>	The product is shipped with ice pack, upon receipt, store it immediately at the temperature recommended.

## Background

Expressed in the hair follicle, nail bed and in mucosal stratified squamous epithelia and, suprabasally, in oral epithelium and palmoplantar epidermis. Also found in luminal cells of sweat and mammary gland ducts.

## For Research Use Only