

Recombinant Ataxin-3 Monoclonal Antibody

catalog number: **AN301440L**

Note: Centrifuge before opening to ensure complete recovery of vial contents.

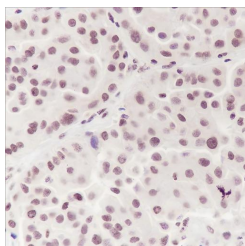
Description

Reactivity	Human;Rat;Mouse
Immunogen	Recombinant human Ataxin-3 fragment
Host	Rabbit
Isotype	IgG, κ
Clone	A135
Purification	Protein A purified
Buffer	PBS, 50% glycerol, 0.05% Proclin 300, 0.05% protein protectant.

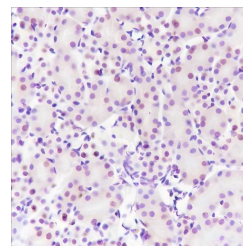
Applications Recommended Dilution

IHC	1:50-1:100
IF	1:50-1:100
FCM	1:50-1:100

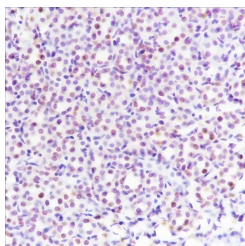
Data



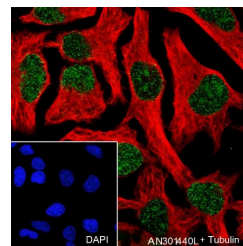
Immunohistochemistry of paraffin-embedded Human lung adenocarcinoma using Ataxin-3 Monoclonal Antibody at dilution of 1:100.



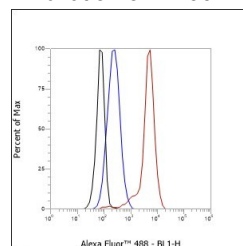
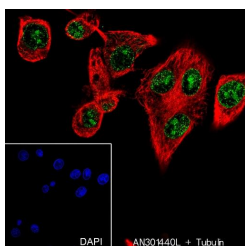
Immunohistochemistry of paraffin-embedded Mouse kidney using Ataxin-3 Monoclonal Antibody at dilution of 1:100.



Immunohistochemistry of paraffin-embedded Rat kidney using Ataxin-3 Monoclonal Antibody at dilution of 1:100.



Immunofluorescent analysis of (100% Ice-cold methanol) fixed HeLa cells using anti-Ataxin-3 Monoclonal Antibody at dilution of 1:100.



For Research Use Only

Toll-free: 1-888-852-8623
Web: www.elabscience.com

Tel: 1-832-243-6086
Email: techsupport@elabscience.com

Fax: 1-832-243-6017

Rev. V1.0

Immunofluorescent analysis of (100% Ice-cold methanol) fixed U-87 MG cells using anti-Ataxin-3 Monoclonal Antibody at dilution of 1:100.

Flow cytometric analysis of human Ataxin-3 expression on SH-SY5Y cells. Cells were stained with purified anti-Human Ataxin-3, then a Alexa Fluor 488-conjugated second step antibody. The histogram were derived from events with the forward and side light-scatter characteristics of intact cells.

Preparation & Storage

Storage Store at -20°C Valid for 12 months. Avoid freeze / thaw cycles.

Shipping Ice bag

Background

Deubiquitinating enzyme involved in protein homeostasis maintenance, transcription, cytoskeleton regulation, myogenesis and degradation of misfolded chaperone substrates.

For Research Use Only