

S-tag Monoclonal Antibody

catalog number: E-AB-48020

Note: Centrifuge before opening to ensure complete recovery of vial contents.

Description

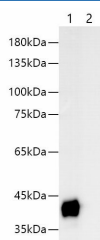
Reactivity	All
Immunogen	Synthetic peptide corresponding to S tag conjugated to keyhole limpet haemocyanin.
Host	Mouse
Isotype	IgG2a
Clone	2A4
Purification	Protein A/G Purification
Conjugation	Unconjugated
Buffer	PBS with 0.05% proclin 300, 1% protective protein and 50% glycerol, pH7.4

Applications

Recommended Dilution

WB	1:2000-4000
-----------	-------------

Data



Western blotting with anti-S-Tag monoclonal antibody at dilution of 1:1000. Lane 1: S tag transfected HEK 293 cell lysates, lane 2: HEK 293 whole cell lysate

Observed-MV:40 kDa

Calculated-MV:40 kDa

Preparation & Storage

Storage	Store at -20°C Valid for 12 months. Avoid freeze / thaw cycles.
Shipping	The product is shipped with ice pack, upon receipt, store it immediately at the temperature recommended.

Background

S tag is an epitope tag composed of a 15 residue peptide, KETAAAKFERQHMDs, derived from the pancreatic ribonuclease A. This interactive complex (S - tag/S - protein) results in micromolar affinity – dependent upon pH, temperature, and ionic strength. The S - tag itself enables colorimetric detection via western blot analysis or a rapidly detected assay dependent upon ribonucleolytic reconstitution and activity.

For Research Use Only