

Recombinant Human Ribonuclease A/RNASE1 Protein (His Tag)

Catalog Number: PKSH033004

Note: Centrifuge before opening to ensure complete recovery of vial contents.

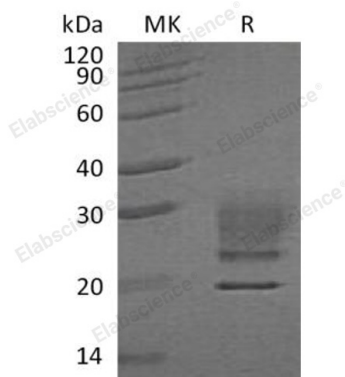
Description

Species	Human
Source	HEK293 Cells-derived Human Ribonuclease A;RNASE1 protein Lys29-Thr156, with an C-terminal His
Calculated MW	15.6 kDa
Observed MW	17-33 kDa
Accession	P07998
Bio-activity	Not validated for activity

Properties

Purity	> 95 % as determined by reducing SDS-PAGE.
Concentration	Subject to label value.
Endotoxin	< 1.0 EU per µg of the protein as determined by the LAL method.
Storage	Store at < -20°C, stable for 6 months. Please minimize freeze-thaw cycles.
Shipping	This product is provided as liquid. It is shipped at frozen temperature with blue ice/gel packs. Upon receipt, store it immediately at < -20°C.
Formulation	Supplied as a 0.2 µm filtered solution of 20mM PB, 150mM NaCl, 10% Glycerol, pH 7.4.

Data



> 95 % as determined by reducing SDS-PAGE.

Background

Ribonuclease Pancreatic is a secreted enzyme that belongs to the pancreatic ribonuclease family. RNASE1 is an endonuclease that cleaves internal phosphodiester RNA bonds on the 3'-side of pyrimidine bases. RNASE1 prefers pol y(C) as a substrate and hydrolyzes 2',3'-cyclic nucleotides, with a pH optimum near 8.0. RNASE1 acts on single stranded and double stranded RNA.